



- Aerospace Compliant Lamps ► LED UV-A Lamps ► Digital Radiometers
► LED Blue Light Lamps ► Modular Systems ► **NEW** IP Rated Lamps



RRES
90061

AMS
2647

EN ISO
3059

DIN
CEN/TR
16638

Spectronics Corporation

Leading the way since 1955,
setting the new standard in NDT
inspection lamps.

NDT plays a crucial role in everyday life. We are proud to manufacture the highest quality medium and high-intensity compliant inspection lamps and products for use in liquid penetrant and magnetic particle NDT.

Setting the New Standard in NDT:

Many of the Spectroline® brand products in this catalog are specifically designed to meet ASTM E3022-15 and EN ISO:3059 standards. Additionally, we have developed many of our lamps to meet the strict compliances for RRES 90061 (Rolls-Royce), and to meet the regulations for safety in the Aerospace sector. Spectroline® remains at the forefront of developing safe NDT products for MPI and LPI around the world.

Global Leaders:

Our products are utilized for literally hundreds of markets and applications that demand uncompromising quality and reliability. Spectroline® lamps and radiometers are widely used by technicians in the field around the globe – including in the military and aerospace sectors, as well as transportation, oil and gas, mining, fabrication, NDT inspection shops, alternative energy, and more.

The World
Leader In **NDT**
Fluorescent
Surface
Inspection

NDT INDUSTRIES



AEROSPACE



ALTERNATIVE
ENERGY



AUTOMOTIVE



FABRICATION



MILITARY



MINING



NDT INSPECTION
SHOPS



OIL & GAS



PIPELINE



TRANSPORTATION/
RAILWAY

SPECTROLINE®
NDT

Our **ASTM** and
Rolls-Royce
compliant
inspection lamps
are *unmatched* in
quality.



E3022

RRES
90061

AMS
2647

EN ISO
3059

DIN
CEN/TR
16638

CONTENTS

ASTM E3022 & RRES 90061 Compliant LED UV-A Lamps

4-9

Each lamp comes complete with a Certificate of Conformance & Validation Report

PowerMAX™ 365 PM-1600SBLC	4-5
TRITAN™ 365 TRI-365SBLC	6-7
NEW! uVision™ 365 Series UV-365SBLC, UV-365HC	8-9

ASTM E3022 Compliant LED UV-A Lamps

10-15

Each lamp comes complete with a Certificate of Conformance

PowerMAX™ 365 PM-1600HC	10-11
QUADRAN™ 365 QDR-365SC	12-13
TRITAN™ 365 TRI-365HC	14-15

EN ISO:3059 LED UV-A Lamps

16-33

Each lamp comes complete with a Certificate of Light Output

EagleEye™ EK-3000	16-17
OnTrak™ 365 ONT-365	18-19
OPTI-LUX™ 365 Series OLX-365, OLX-365B, OLX-365FL, OLX-365BFL	20-21
PowerMAX™ 365 Series PM-1600UV, PM-1600BLH, PM-1600UVH	22-23
QUADRAN™ 365 S-Series QDR-365SA, QDR-365MSA, QDR-365MSBLA	24-25
TRITAN™ 365 Series TRI-365HB, TRI-365DB, TRI-365MHB, TRI-365MDB, TRI-365MDBB	28-31
NEW! uVision™ 365 Standard Series UV-365ES, UV-365EH	32-33

LED Blue Light Lamps

34-41

Meet DIN CEN/TR 16638 Specifications

OPTIMAX™ 450 OPX-450	34-35
OnTrak™ 450 ONT-450	36-37
PowerMAX™ 450 PM-1600B	38-39
TRITAN™ 450 TRI-450B, TRI-450MB	40-41

Bulb UV-A Lamps

42-45

Affordable, reliable NDT classics

MAXIMA™ ML-3500 Series ML-3500S, ML-3500PRS, ML-3500FL, ML-3500MS	42-43
UV-400 Series UV-400A, UV-400B	44

UV-A LED Replacement Bulb for Traditional Lamps:

NEW! VIVID™ Series BLE-LED-100, BLE-LED-150, BLE-LED-150/F	45
---	----

Digital Radiometers

46-49

ANSI and NIST Traceable

AccuPRO™ Digital Radiometer/Photometer XP-2000/XP-4000	46-47
AccuMAX™ Digital Radiometer/Photometer XRP-3000	48-49

Beam Profile Comparison Page 26-27

Sample Certificates of Conformance & Validation Reports 50

Customer Service/Support 51



PROUD MEMBERS OF:

PM-1600SBLC

PowerMAX™ 365

Compliant, Standard Intensity LED UV-A Overhead Flood Panel Lamp

PowerMAX™ 365 Series flood lamps feature a panel of 16 powerful LEDs UV-A (365 nm) specially engineered for nondestructive testing applications. These versatile, stationary light sources can be installed overhead or in-line, and can be ganged together to provide an even wider coverage area.

► **ASTM E3022 and Rolls-Royce RRES 90061 Compliant**

TESTED
TO COMPLY WITH
BOTH



ASTM E3022
Standard

Rolls-Royce
RRES 90061
Requirements



For applications requiring extremely large coverage areas, the PowerMAX™ 365 can be quickly ganged together longitudinally (top) or back-to-back (below) using customized, easy-to-install connecting plates and brackets.



BUILT-IN FANS
maintain optimum
light output

**EASILY
MOUNTABLE**
for overhead inspection
or in-line applications

**STANDARD
INTENSITY
COMPLIANT
LAMP**

**THERMAL CUT-OFF
CIRCUITRY**
prevents lamp from going
out of compliance when
internal temperature
exceeds specifications

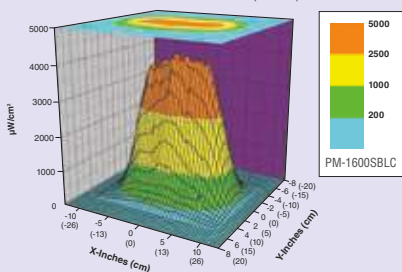
**LONG-LASTING
UV-A LENSES**
reduce the rate of
solarization

16 LEDs UV-A
provide large area
of coverage

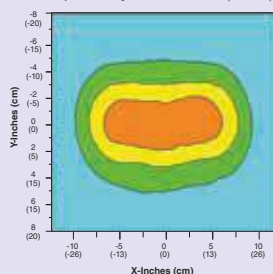
**BLACK LIGHT
FILTER**
reduces output of
wavelengths longer
than 400 nm

UV-A Beam Profile & Longitudinal Scans

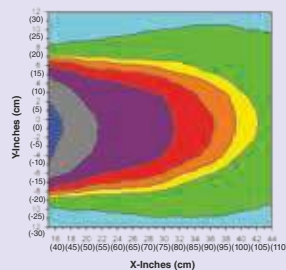
Surface Contour Profile at 15 in (38 cm)



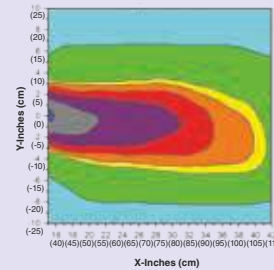
Top Intensity Profile at 15 in (38 cm)



Longitudinal along the Y-AXIS



Longitudinal along the X-AXIS



Ideal for:

NDT
Inspection
BoothsFluorescent
Penetrant and
Magnetic Particle
InspectionLarge Parts
InspectionCustomizable/
Gangable

Technical Features

NOMINAL STEADY-STATE UV-A INTENSITY at 15 in (38 cm) ❶	UV-A COVERAGE AREA at 15 in (38 cm) at minimum 1,200 µW/cm²		VISIBLE LIGHT MEASUREMENT	LIGHT SOURCE
4,500 µW/cm²	15 x 6 in (38 x 15 cm)		< 0.5 foot-candles (5 lux)	16 LEDs UV-A (365 nm)
DIMENSIONS (W x L x H)	WEIGHT	POWER REQUIREMENTS	COOLING SYSTEM	LAMP STYLE
5.5 x 13.75 x 6 in (14 x 35 x 15 cm)	9 lbs (4 kgs)	AC power (main AC power cord supplied with the unit) (Available in 120V, 230V, 240V and 100V versions)	Built-in fans	Panel flood lamp

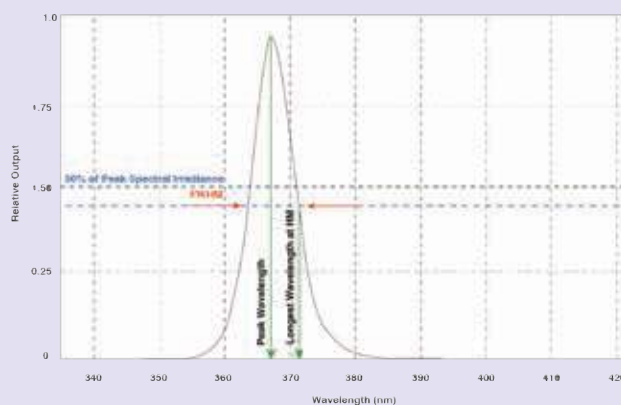
① UV-A intensity reading taken with the Spectroline® AccuMAX™ Series meter, and is factory set to the value shown.



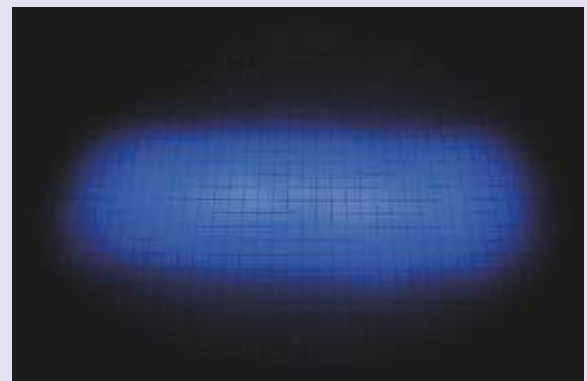
Replacement Parts and Accessories

IMAGE	PART #	DESCRIPTION	IMAGE	PART #	DESCRIPTION
	127918	Particulate air filter		CP-100	Top connecting plate for ganging lamps longitudinally
	127935	Retainer LED assembly face plate		CP-200	Top connecting plate for ganging lamps back-to-back (2 required)
	128177	AC power cord		CP-300	Side connecting bracket for ganging lamps longitudinally (2 required)
	BF-365PM	Black light filter assembly		UL-110	Long lasting UV-A lens
	CC-200	Connector cable for ganging lamps		UVS-30	UV-absorbing spectacles
	CF-100	Clear glass filter assembly			

Normalized UV Irradiance



Uniform Beam Pattern PM-1600SBLC at 11 in (27 cm)



TRI-365SBLC TRITAN™ 365

Compliant, Standard Intensity LED UV-A Handheld Inspection Lamp

Cool running and powerful. Features three LEDs UV-A for fluorescent inspection, plus a convenient white Light LED to scan for surface flaws and illuminate dark work areas. The broad-beam configuration provides a wide coverage area. A compact head design allows access into areas inaccessible to larger UV inspection lamps.

► **ASTM E3022 and Rolls-Royce RRES 90061 Compliant**

TESTED
TO COMPLY WITH
BOTH

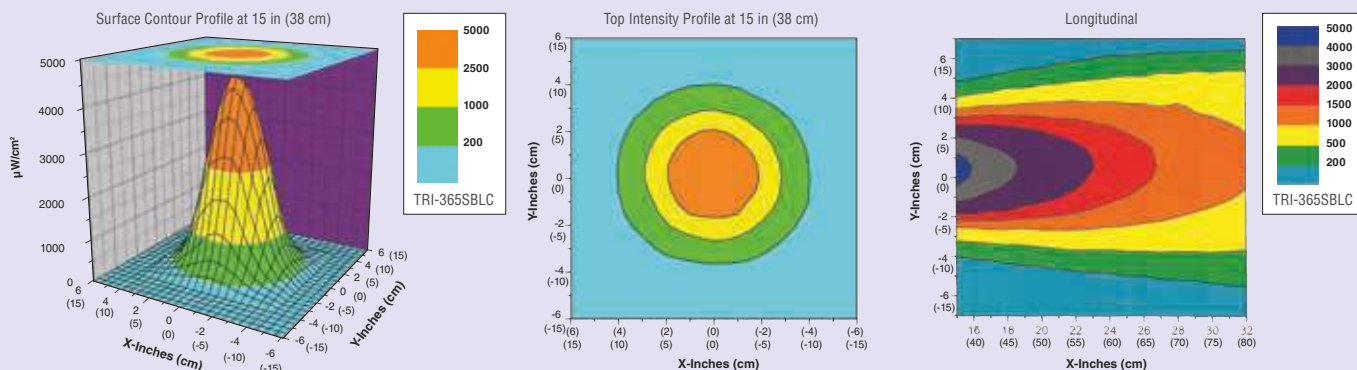


ASTM E3022
Standard

**Rolls-Royce
RRES 90061**
Requirements



UV-A Beam Profile & Longitudinal Scans



Technical Features

NOMINAL STEADY-STATE UV-A INTENSITY at 15 in (38 cm) ①		UV-A COVERAGE AREA at 15 in (38 cm) at minimum 1,200 $\mu\text{W}/\text{cm}^2$		VISIBLE LIGHT MEASUREMENT	WHITE LIGHT LED INTENSITY	LIGHT SOURCE
4,500 $\mu\text{W}/\text{cm}^2$		5.5 in (14 cm) Diameter		< 0.5 foot-candles (5 lux)	400 foot-candles (4,306 lux)	3 UV-A (365 nm) LEDs, 1 white light LED
LAMP HEAD DIAMETER	LENGTH	WEIGHT	POWER REQUIREMENTS		COOLING SYSTEM	LAMP STYLE
3.25 in (8.25 cm)	8 in (20.3 cm)	1 lb (454 g)	100-120VAC / 12VDC (Also available in 230V & 240V versions)		Built-in fan	Pistol grip

① UV-A intensity reading taken with the Spectroline® AccuMAX™ Series meter, and is factory set to the value shown.

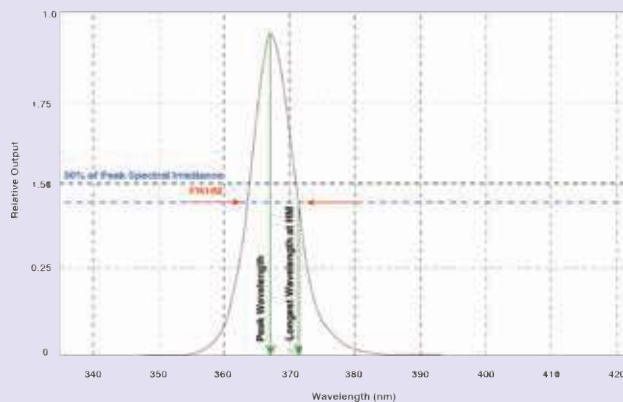


Replacement Parts and Accessories

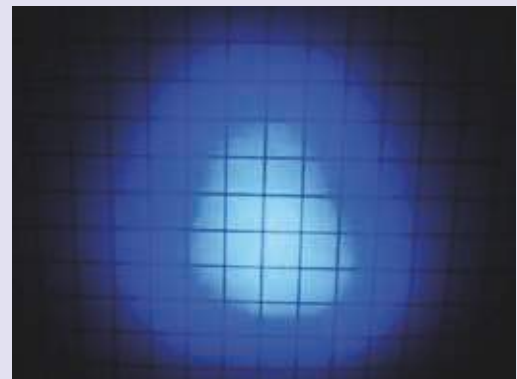
IMAGE	PART #	DESCRIPTION	IMAGE	PART #	DESCRIPTION
	127933	Particulate filter assembly		FP-365	Rubber bumper with Borofloat® glass
	128196	Faceplate with integral black light filters		PS-200A	Industrial power supply / primary cord: 8 feet (2.4 m); secondary cord: 20 feet (6.1 m)
	129141	Standard 8 foot (2.4 m) AC power cord		PS-300A	In-line power supply / primary cord: 8 feet (2.4 m); secondary cord: 8 feet (2.4 m)
	129145	Extra-long 20 foot (6.1 m) AC power cord		UL-110	Long lasting UV-A lens
	B-6*	Bench mount		UVS-30	UV-absorbing spectacles
	BR-150A	Smart AC charger		W-6*	Bench mount with pin
	CC-370A	Padded carrying case		WM-100*	Wall mounting bracket

* Must be used in conjunction with LH-300A for connecting

Normalized UV Irradiance



Uniform Beam Pattern TRI-365SBLC at 6 in (15 cm)



COMING SOON!

UV-365SBLC & UV-365HC uVision™ 365 Deluxe Series

Compliant, IP Rated, Fanless LED UV-A Handheld Inspection Lamp

First to a brand new line of Spectrolines® products, this is our most compact inspection lamp available, with a rugged, cool-running design.

- ▶ **ASTM E3022 and Rolls-Royce RRES 90061 Compliant**
- ▶ **Available in Standard and High Intensity Versions***

TESTED
TO COMPLY WITH
BOTH



ASTM E3022
Standard

Rolls-Royce
RRES 90061
Requirements

FANLESS DESIGN
maintains optimum lamp
temperature and will never
break down

3 LEDs UV-A
for wide area of
coverage

**WHITE LIGHT
LED** allows for
scanning surface
flaws

**LONG-LASTING
UV-A LENSES**
Reduce the rate of
solarization

Faceplate with
**INTEGRAL BLACK
LIGHT FILTERS**

EASY CONTROL
grip-mounted, three-way
sealed rocker switch
(white light/off/UV)

PISTOL GRIP
comfortable,
balanced control



**High intensity version is ASTM E3022 Compliant (UV-365HC)*

OUR MOST COST EFFECTIVE, RUGGED LAMP SERIES.

**IP65
RATED**

IP RATED



WIDE BEAM
PROFILES



FANLESS
COOLING
SYSTEM



RUGGED &
LIGHTWEIGHT



uVision™ 365

NO GIMMICKS. JUST THE LAMP.



From Spectrolite®, the leader in NDT fluorescent surface inspection.

STANDARD SERIES:

- **HIGH** (UV-365EH at 7,000 $\mu\text{W}/\text{cm}^2$)
- **STANDARD** (UV-365ES at $<5,000 \mu\text{W}/\text{cm}^2$)

DELUXE SERIES:

- **STANDARD COMPLIANT** (UV-365SBLC at $<5,000 \mu\text{W}/\text{cm}^2$)
- **HIGH INTENSITY COMPLIANT** (UV-365HC at 7,000 $\mu\text{W}/\text{cm}^2$)

COMING SOON!

PM-1600HC

PowerMAX™ 365

Compliant, High Intensity LED UV-A Overhead Flood Panel Lamp

PowerMAX™ 365 Series flood lamps feature a panel of 16 powerful LEDs UV-A (365 nm) specially engineered for nondestructive testing applications. These versatile, stationary light sources can be installed overhead or in-line, and can be ganged together to provide an even wider coverage area.

► **ASTM E3022 Compliant**

TESTED
TO COMPLY WITH



ASTM E3022
Standard



For applications requiring extremely large coverage areas, the PowerMAX™ 365 can be quickly ganged together longitudinally (top) or back-to-back (below) using customized, easy-to-install connecting plates and brackets.



BUILT-IN FANS
maintain optimum
light output

**EASILY
MOUNTABLE**
for overhead inspection
or in-line applications

**HIGH
INTENSITY
COMPLIANT
LAMP**

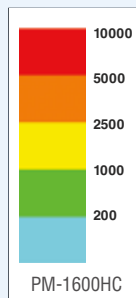
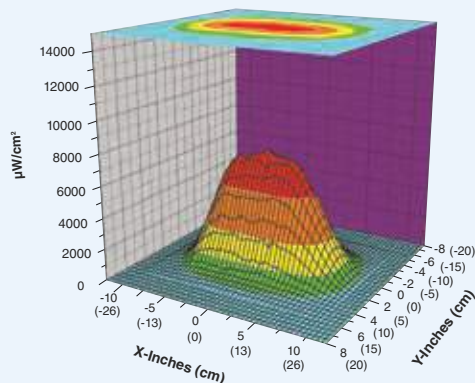
**LONG-LASTING
UV-A LENSES**
reduce the rate of
solarization

16 LEDs UV-A
provide large area
of coverage

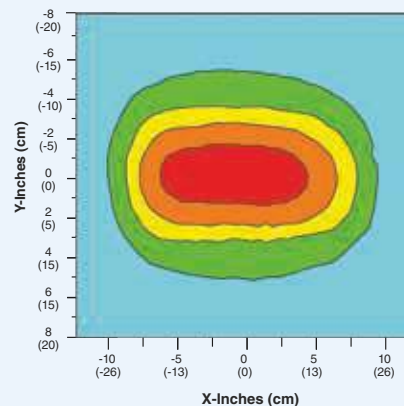
**BLACK LIGHT
FILTER**
reduces output of
wavelengths longer
than 400 nm

UV-A Beam Profile

Surface Contour Profile at 15 in (38 cm)



Top Intensity Profile at 15 in (38 cm)



Ideal for:

NDT
Inspection
BoothsFluorescent
Penetrant and
Magnetic Particle
InspectionLarge Parts
InspectionCustomizable/
Gangable

Technical Features

NOMINAL STEADY-STATE UV-A INTENSITY at 15 in (38 cm) ①	UV-A COVERAGE AREA at 15 in (38 cm) at minimum 1,200 $\mu\text{W}/\text{cm}^2$	VISIBLE LIGHT MEASUREMENT	LIGHT SOURCE
7,000 $\mu\text{W}/\text{cm}^2$	16 x 6 in (40 x 15 cm)	< 1 foot-candles (11 lux)	16 LEDs UV-A (365 nm)

DIMENSIONS (W x L x H)	WEIGHT	POWER REQUIREMENTS	COOLING SYSTEM	LAMP STYLE
5.5 x 13.75 x 6 in (14 x 35 x 15 cm)	9 lbs (4 kgs)	AC power (main AC power cord supplied with the unit) (Available in 120V, 230V, 240V and 100V versions)	Built-in fans	Panel flood lamp

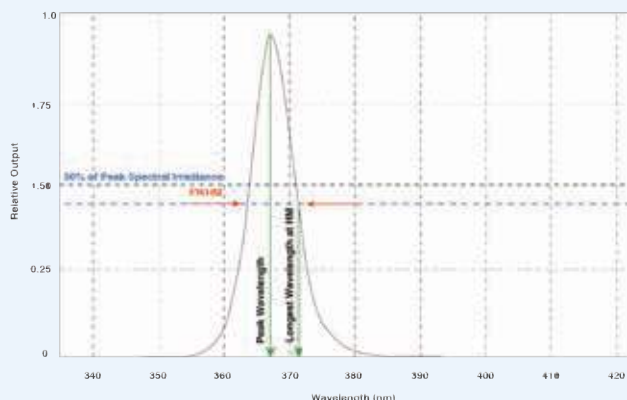
① UV-A intensity reading taken with the Spectroline® AccuMAX™ Series meter, and is factory set to the value shown.



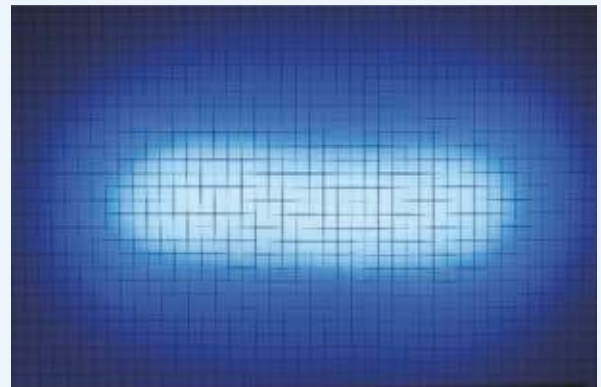
Replacement Parts and Accessories

IMAGE	PART #	DESCRIPTION	IMAGE	PART #	DESCRIPTION
	127918	Particulate air filter		CP-100	Top connecting plate for ganging lamps longitudinally
	127935	Retainer LED assembly face plate		CP-200	Top connecting plate for ganging lamps back-to-back (2 required)
	128177	AC power cord		CP-300	Side connecting bracket for ganging lamps longitudinally (2 required)
	BF-365PM	Black light filter assembly		UL-110	Long lasting UV-A lens
	CC-200	Connector cable for ganging lamps		UVS-30	UV-absorbing spectacles
	CF-100	Clear glass filter assembly			

Normalized UV Irradiance



Uniform Beam Pattern PM-1600HC at 11 in (27 cm)



QDR-365SC QUADRAN™ 365

Compliant, Standard Intensity LED UV-A Broad Beam Handheld Lamp

Features four LEDs UV-A plus a convenient white light LED to quickly switch between fluorescent inspection and flaw location. The broad-beam configuration produces an extremely wide coverage area, making this an ideal lamp for both in-line and hand-held applications.

► **ASTM E3022 Compliant**

TESTED
TO COMPLY WITH



ASTM E3022
Standard

**LONG-LASTING
UV-A LENSES**

reduce the rate of
solarization

**WHITE LIGHT
LED**

allows for
scanning surface
flaws

**Faceplate with
INTEGRAL BLACK
LIGHT FILTERS**

reduce output of
wavelengths longer
than 400 nm

RUBBER BUMPER

with Borofloat® glass
lens protects LEDs
from damage

BUILT-IN FANS

maintain optimum
light output

EASY CONTROL

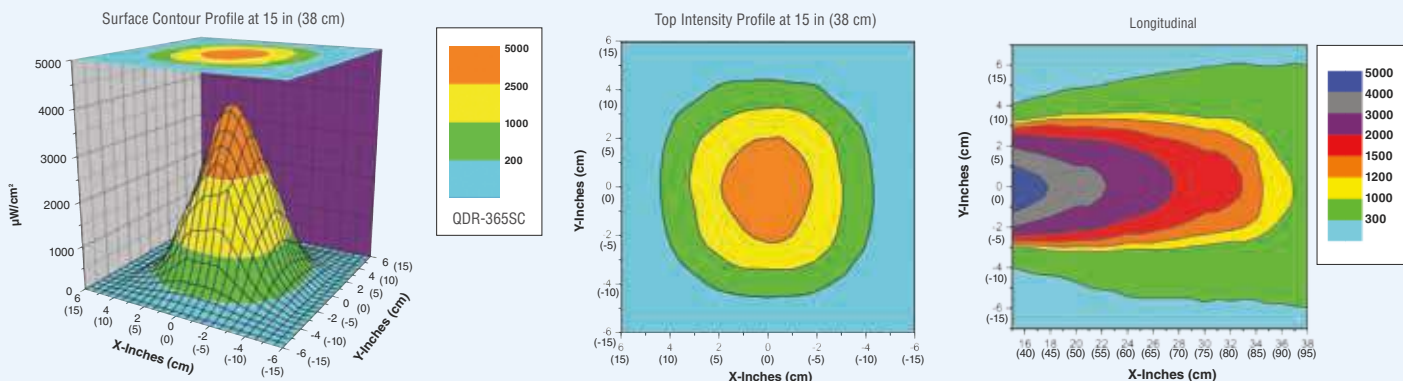
Rear-mounted, three-way rocker switch
(white light/off/UV)



IN-LINE INSPECTION

lamp handle pin receptacle
allows for easy mounting
attachments

UV-A Beam Profile & Longitudinal Scans






















Technical Features

NOMINAL STEADY-STATE UV-A INTENSITY at 15 in (38 cm) ❶		UV-A COVERAGE AREA at 15 in (38 cm) at minimum 1,200 μW/cm²		VISIBLE LIGHT MEASUREMENT	WHITE LIGHT LED INTENSITY	LIGHT SOURCE
3,700 μW/cm²		6 in (15 cm) Diameter		< 0.5 foot-candles (5 lux)	High setting: 300 foot-candles (3,229 lux) Low setting: 10 foot-candles (108 lux)	4 UV-A (365 nm) LEDs, 1 white light LED
LAMP HEAD DIMENSIONS (W x H)	LENGTH	WEIGHT	POWER REQUIREMENTS		COOLING SYSTEM	LAMP STYLE
6 x 5.5 in (15 x 14 cm)	10 in (25 cm)	3 lbs (1.36 kg)	100-120VAC / 12VDC (Also available in 230V & 240V versions)		Built-in fan	Pistol grip

① UV-A intensity reading taken with the Spectroline® AccuMAX™ Series meter, and is factory set to the value shown.

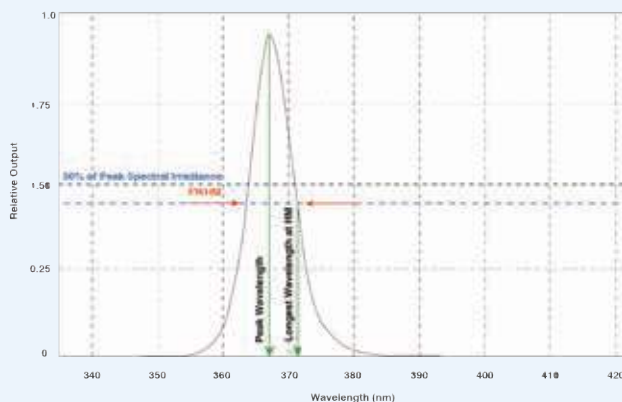


Replacement Parts and Accessories

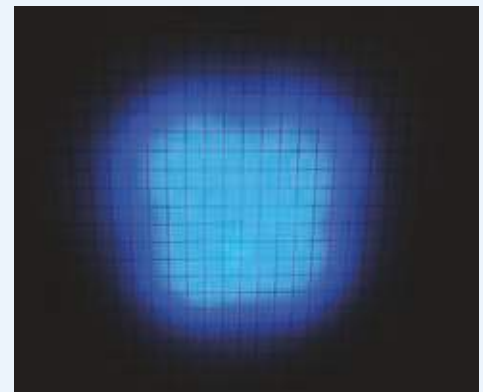
IMAGE	PART #	DESCRIPTION	IMAGE	PART #	DESCRIPTION
	127922	Particulate filter assembly		FA-100	Flexible arm
	127944	Standard faceplate		FP-550	Rubber bumper with Borofloat® glass
	128094	Faceplate with integral black light filters		PS-200A	Industrial power supply. primary cord: 8 feet (2.4 m); secondary cord: 20 feet (6.1 m).
	129141	Standard, 8-foot (2.4 m) AC power cord		PS-300A	In-line power supply. primary cord: 8 feet (2.4 m); secondary cord: 8 feet (2.4 m).
	129145	Extra-long 20 foot (6.1 m) AC power cord		PSA-250A	AC/DC power supply adapter for "M" series lamps
	129162	3.5 foot (1.1 m) DC power cord for "M" series lamps		UL-110	Long lasting UV-A lens
	B-6*	Bench mount		UVS-30	UV-absorbing spectacles
	BP-30	Battery pack with 12V rechargeable NiMH battery		W-6*	Bench mount with pin
	BR-150A	Smart AC charger		WM-100*	Wall mounting bracket
	CC-400	Padded carrying case			

* Must be used in conjunction with LH-300A for connecting

Normalized UV Irradiance



Uniform Beam Pattern QDR-365SC at 10 in (25 cm)



TRI-365HC TRITAN™ 365

Compliant, High Intensity LED UV-A Handheld Inspection Lamp

High intensity LED UV-A output enables inspectors to detect flaws faster and with greater efficiency. Compact, reliable, and quality made.

► **ASTM E3022 Compliant**

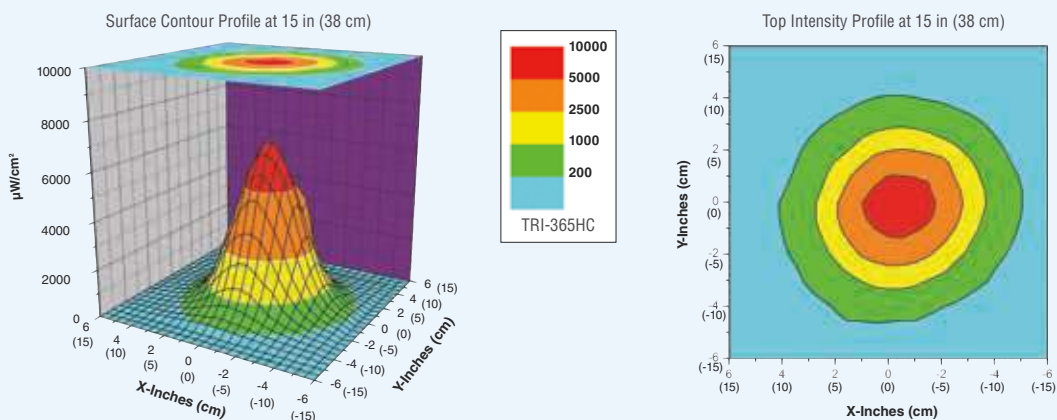
TESTED
TO COMPLY WITH



ASTM E3022
Standard



UV-A Beam Profile








Technical Features

NOMINAL STEADY-STATE UV-A INTENSITY at 15 in (38 cm) ❶		UV-A COVERAGE AREA at 15 in (38 cm) at minimum 1,200 μW/cm²		VISIBLE LIGHT MEASUREMENT	WHITE LIGHT LED INTENSITY	LIGHT SOURCE
7,000 μW/cm²		6 in (15 cm) Diameter		< 1 foot-candles (11 lux)	400 foot-candles (4,306 lux)	3 LEDs UV-A (365 nm), 1 white light LED
LAMP HEAD DIAMETER	LENGTH	WEIGHT	POWER REQUIREMENTS		COOLING SYSTEM	LAMP STYLE
3.25 in (8.25 cm)	8 in (20.3 cm)	1 lb (454 g)	100-120VAC / 12VDC (Also available in 230V & 240V versions)		Built-in fan	Pistol grip

① UV-A intensity reading taken with the Spectroline® AccuMAX™ Series meter, and is factory set to the value shown.

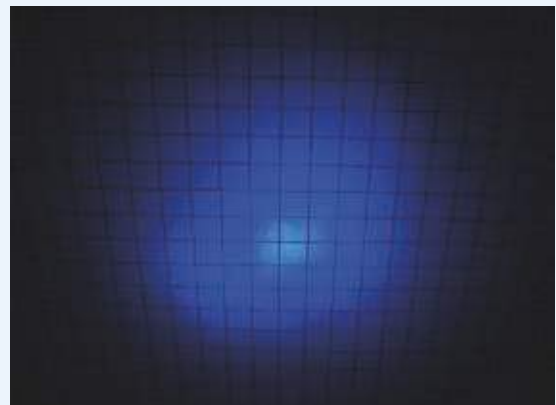


Replacement Parts and Accessories

IMAGE	PART #	DESCRIPTION	IMAGE	PART #	DESCRIPTION
	127933	Particulate filter assembly		CC-370A	Padded carrying case
	127955	Standard faceplate		FP-365	Rubber bumper with Borofloat® glass
	128196	Faceplate with integral black light filters		PS-200A	Industrial power supply / primary cord: 8 feet (2.4 m); secondary cord: 20 feet (6.1 m).
	129141	Standard 8 foot (2.4 m) AC power cord		PS-300A	In-line power supply / primary cord: 8 feet (2.4 m); secondary cord: 8 feet (2.4 m).
	129145	Extra-long 20 foot (6.1 m) AC power cord		UL-110	Long lasting UV-A lens
	129162	3.5 foot (1.1 m) DC power cord for "M" series lamps		UVS-30	UV-absorbing spectacles
	B-6*	Bench mount		W-6*	Bench mount with pin
	BR-150A	Smart AC charger		WM-100*	Wall mounting bracket

* Must be used in conjunction with LH-300A for connecting

Uniform Beam Pattern TRI-365HC at 6 in (15 cm)



HIGH INTENSITY, ASTM COMPLIANT, LED UV-A inspection lamp, with a wide beam coverage area and a uniform beam pattern.

EK-3000 EagleEye™

Hands-Free UV-A LED/White Lamp LED Inspection Kit

Can you see like an Eagle? Locate fluorescent indications quickly and accurately with this convenient hands-free lamp. Ideal for MPI testing, oil and gas inspection, ship inspection, and anywhere you need an extra free hand.

MEETS
SPECIFICATIONS
OF

COMING SOON!

EN ISO:3059

Ideal for:



Magnetic
Particle
Inspection



Ship
Inspection



Oil & Gas
Inspection



LED lamp with head strap
option for hands-free
operation



Attaches easily
to ANY magnetic
particle can — hold
yoke in other hand.



**MAKES MPI A
ONE-PERSON
JOB WHILE OUT
IN THE FIELD.**

EK-3000 EagleEye™ Kit

comes complete with EE-365 LED UV-A/white light lamp with a lanyard, two replacement splash guards with integral particulate filters, head strap, lamp mount/sprayer, two spare rechargeable batteries, battery charging cradle with AC/DC cord sets, UV-absorbing spectacles and padded carrying case.



Technical Features

NOMINAL STEADY-STATE UV-A INTENSITY at 15 in (38 cm) ①	UV-A COVERAGE AREA at 15 in (38 cm) at minimum 1,200 μW/cm²		LIGHT SOURCE	LAMP STYLE	
4,500 μW/cm²	5.5 in (14 cm)		2 LEDs UV-A (365 nm), 3 white light LEDs		Cordless hand-held
DIMENSIONS (L x W x H):	WEIGHT (with Battery)	POWER REQUIREMENT	RUN TIME	CHARGE TIME	CHARGING CRADLE
3.75 x 2.25 x 1.85 in (9.5 x 5.7 x 4.7 cm)	8 oz (227 g)	One 3.7V 2600mA/Hr Lithium-ion battery (rechargeable)	75 minutes (continuous)	4 hours (one or two batteries)	Two-battery capability with AC/DC cord sets (Available in 100-120V, 230V & 240V versions)

NOTE: All UV-A intensity readings taken with a Spectroline® AccuMAX™ Series meter.

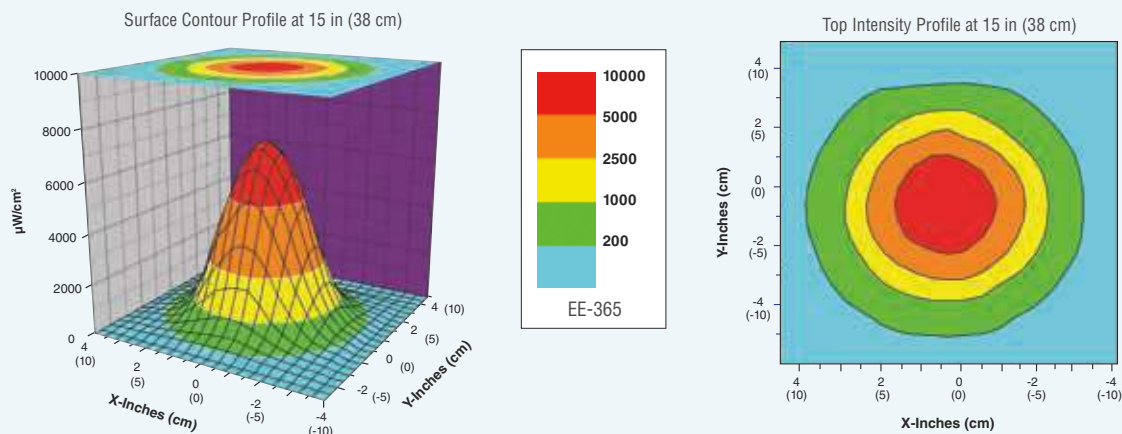


Replacement Parts and Accessories

IMAGE	PART #	DESCRIPTION
	127568	Lithium-ion battery (rechargeable)
	128217	Battery charging cradle with AC/DC cord sets
	CC-370A	Padded carrying case
	EE-365	LED UV-A/white light lamp
	HS-100	Head strap

IMAGE	PART #	DESCRIPTION
	LMS-100	Lamp mount/sprayer
	SG-100	Splash guard with integral particulate filter (set of three)
	UL-110	Long lasting UV-A lens
	UVS-30	UV-absorbing spectacles

UV-A Beam Profile



ONT-365A OnTrak™ 365

LED UV-A/White Light Modular Track Lighting Systems

Innovative, track-light style modular systems for convenience and versatility. Increase or decrease coverage area as needed. Comes attached to a mountable platform.

MEETS
SPECIFICATIONS
OF



EN ISO:3059

CUSTOMIZABLE
TRACKS!



OPTIONAL REMOTE CONTROL

Rocker switch provides added
convenience & versatility

LONG-LASTING UV-A LENSES

Reduce the rate of
solarization

WHITE LIGHT LED

allows for
scanning surface flaws

BUILT IN FANS

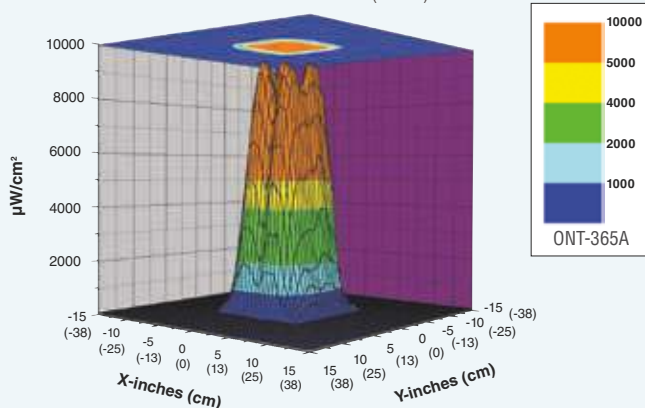
keep LEDs cool

FILTER PROTECTORS

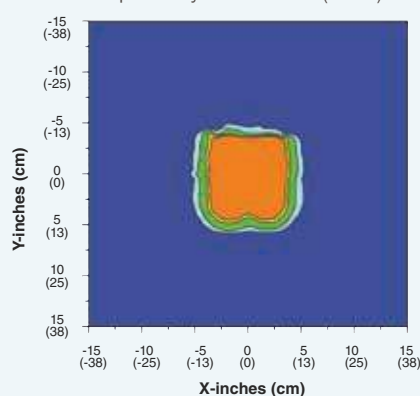
with rubber bumper and
borofloat® glass lens

UV-A Beam Profiles

Surface Contour Profile at 15 in (38 cm)



Top Intensity Profile at 15 in (38 cm)





**Very Broad
Coverage Area**



**Cool
Running**



**Large Parts
Inspection**



Customizable

Technical Features

NOMINAL STEADY-STATE UV-A INTENSITY at 15 in (38 cm) ①	VISIBLE LIGHT MEASUREMENT	LIGHT SOURCE	LAMP STYLE	WHITE LIGHT LED INTENSITY
9,000 $\mu\text{W}/\text{cm}^2$	< 2 foot-candle (22 lux)	3 LEDs UV-A (365 nm), 1 white light LED per lamp head	Overhead track system	400 foot-candles (4,306 lux)
LAMP HEAD DIAMETER	LAMP LENGTH	PLATFORM DIMENSIONS: (L X W X H)	PLATFORM WEIGHT	POWER REQUIREMENTS
3.25 in (8.3 cm)	9.5 in (24 cm)	28.5 x 18.3 x 2.5 in (72 x 46 x 6 cm)	13 lb (5.9 kg)	100-240VAC / 12VDC

① UV-A intensity reading taken with the Spectroline® AccuMAX™ Series meter, and is factory set to the value shown.



Replacement Parts and Accessories

IMAGE	PART #	DESCRIPTION	IMAGE	PART #	DESCRIPTION
	AF-200	Air filter (package of 24)		RC-200	AC remote control with 8 foot (2.4 m) cord
	FP-100A	Filter protector with rubber bumper and borofloat® glass lens		UVF-80	UV-absorbing face shield
	LA-365A	(1) LED lamp head assembly with (3) LEDs UV-A, (1) White light LED, AF-200 air filter and FP-100A filter protector		UVG-50	UV-absorbing goggles
	PS-100A	AC power supply module (100-240V / 50-60Hz)		UVS-30	UV-absorbing spectacles
	PT-200	Platform and track assembly			

OLX-365 SERIES OPTI-LUX™ 365

LED UV-A Flashlight Series for NDT

These hand-held, flashlight style NDT inspection lamps feature a powerful LED UV-A (365 nm) light source in a rugged, anodized lamp body. Lightweight and compact to reduce user fatigue. Bright, uniform beams that outshine more expensive lamps. Available in four models: high-intensity, standard-intensity, both with or without internal black light filters.

MEETS
SPECIFICATIONS
OF



EN ISO:3059

Key Features:



Rechargeable
Li-ION Battery



Bright &
Uniform Beams



Instant-on
Operation



Small Space
Inspection



ULTRA
VIOLET
LED

ANODIZED ALUMINUM LAMP BODY

minimizes corrosion and stands
up to years of heavy use

CONVENIENT ON/OFF SWITCH

for easy one-handed operation

Technical Features

Light Source	LED UV-A (365 nm)
Lamp Style	Cordless flashlight
Lamp Head Diameter	1.25 in (3.2 cm)
Length	5.9 in (15 cm)
Weight (w/Battery)	4.6 oz (130 g)
Power Requirement	(1) 3.7V 2600mA/Hr lithium-ion battery (rechargeable)
Run Time	4 hours (continuous)
Charge Time	4 hours (one or two batteries)
Charging Cradle	Two-battery capability with AC/DC cord sets (Available in 100-120V, 230V & 240V versions)

Series Lamp Comparisons

OPTI-LUX™	HIGH INTENSITY	STANDARD INTENSITY	CLEAR FILTER	BLACK LIGHT FILTER	NOMINAL STEADY-STATE UV-A INTENSITY at 15 in (38 cm) ①	VISIBLE LIGHT MEASUREMENT	UV-A COVERAGE AREA at 15 in (38 cm) at minimum 1,200 µW/cm²
OLX-365	●		●		10,000 µW/cm²	0.8 foot-candles (8.6 lux)	2 in (5.0 cm)
OLX-365B	●			●	10,000 µW/cm²	0.4 foot-candles (4.3 lux)	2 in (5.0 cm)
OLX-365FL		●	●		4,500 µW/cm²	0.3 foot-candles (3.2 lux)	2.5 in (6.3 cm)
OLX-365BFL		●		●	4,500 µW/cm²	0.2 foot-candles (2.1 lux)	2.5 in (6.3 cm)

① UV-A intensity reading taken with the Spectroline® AccuMAX™ Series meter, and is factory set to the value shown.





OPTI-LUX™ 365

SERIES FLASHLIGHTS comes complete with OPX-365 LED UV-A lamp with lanyard, two rechargeable batteries, smart charging cradle with AC/DC cord sets, UV-absorbing spectacles, belt holder and a hard padded carrying case.

OPTI-LUX™ 365

with **BF-365LX** external black light filter accessory

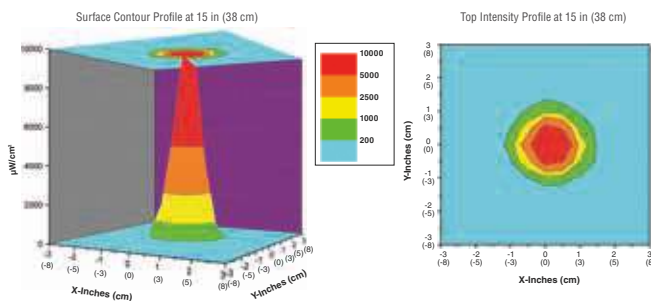


Replacement Parts and Accessories

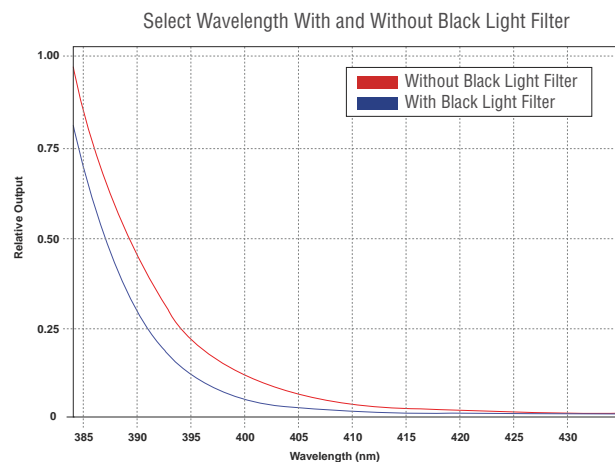
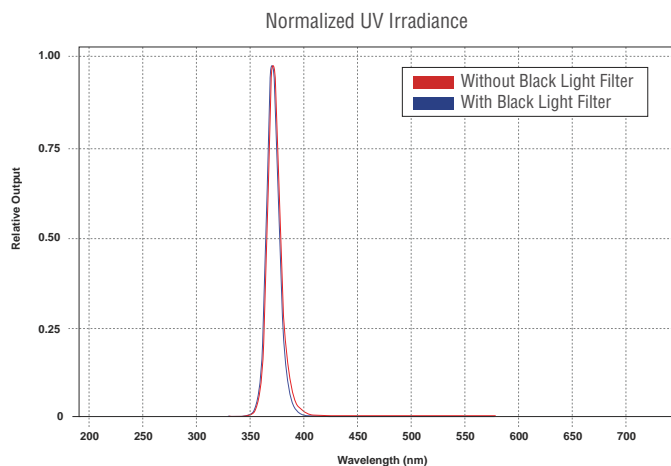
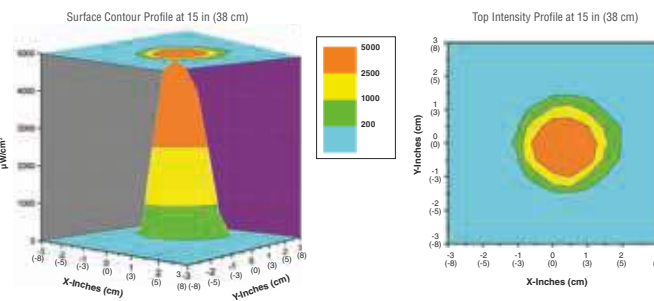
IMAGE	PART #	DESCRIPTION
	127423	Dome lens
	127568	Lithium-ion battery (rechargeable)
	127574	Belt holder
	127607	Internal black light filter
	127785	Internal clear filter

IMAGE	PART #	DESCRIPTION
	128217	Battery charging cradle with AC/DC cord sets
	BF-365LX	External black light filter with rubber bumper
	CC-365	Hard carrying case
	UVS-30	UV-absorbing spectacles

High Intensity UV-A Beam Profile



Standard Intensity UV-A Beam Profile



PM-1600 SERIES

PowerMAX™ 365

LED UV-A Overhead Flood Panel Lamps

Available in one standard-intensity model and two high-intensity models.

PowerMAX™ 365 Series flood lamps feature a panel of 16 powerful LEDs UV-A (365 nm) specially engineered for nondestructive testing applications. These versatile, stationary light sources can be installed overhead or in-line, and can be ganged together to provide an even wider coverage area.

MEETS
SPECIFICATIONS
OF



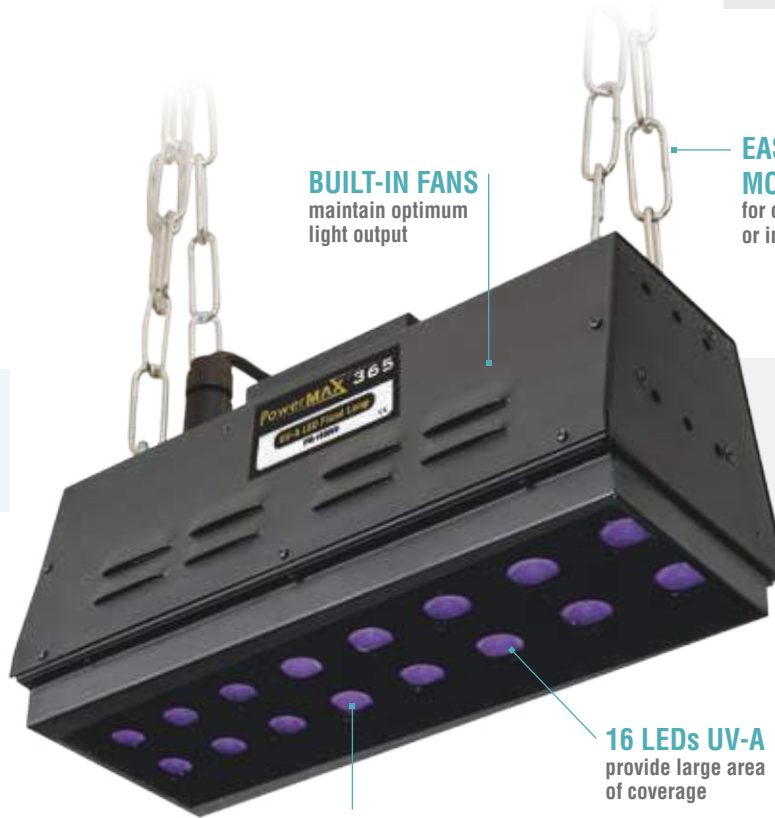
EN ISO:3059



BUILT-IN FANS
maintain optimum
light output

**EASILY
MOUNTABLE**
for overhead inspection
or in-line applications

For applications requiring extremely large coverage areas, the PowerMAX™ 365 can be quickly ganged together longitudinally (top) or back-to-back (below) using customized, easy-to-install connecting plates and brackets.



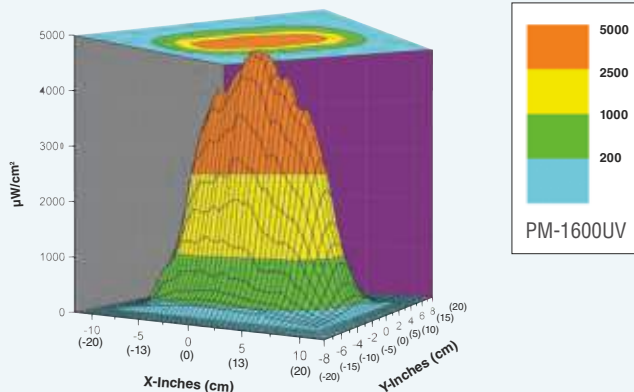
**MAXIMUM
UNIFORMITY
and UV-A
COVERAGE.**

16 LEDs UV-A
provide large area
of coverage

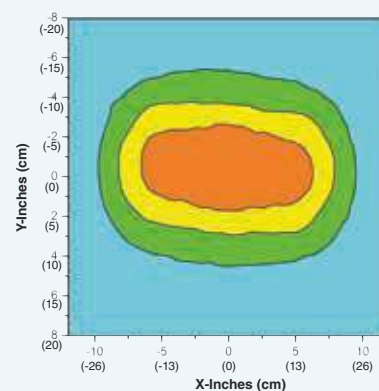
**LONG-LASTING
UV-A LENSES**
reduce the rate of
solarization

Standard Intensity UV-A Beam Profile

Surface Contour Profile at 15 in (38 cm)



Top Intensity Profile at 15 in (38 cm)



Series Lamp Comparisons

PowerMAX™	CLEAR FILTER	INTEGRAL BLACK LIGHT FILTER	VISIBLE LIGHT MEASUREMENT	NOMINAL STEADY-STATE UV-A INTENSITY at 15 in (38 cm) ①	UV-A COVERAGE AREA at 15 in (38 cm) at minimum 1,200 $\mu\text{W}/\text{cm}^2$
PM-1600UV* STANDARD INTENSITY	●		< 1 foot-candle (11 lux)	4,500 $\mu\text{W}/\text{cm}^2$ maximum	15 x 6 in (38 x 15 cm)
PM-1600BLH HIGH INTENSITY		●	< 1 foot-candle (11 lux)	6,500 $\mu\text{W}/\text{cm}^2$ maximum	15 x 6 in (38 x 15 cm)
PM-1600UVH HIGH INTENSITY	●		< 2 foot-candle (22 lux)	8,000 $\mu\text{W}/\text{cm}^2$ maximum	15 x 6 in (38 x 15 cm)

① UV-A intensity reading taken with the Spectroline® AccuMAX™ Series meter, and is factory set to the value shown.

*The **PM-1600UV** is equipped with a clear glass filter and provides a nominal steady-state UV-A intensity of **4,500 $\mu\text{W}/\text{cm}^2$** (maximum) at 15 in (38 cm).

Technical Features

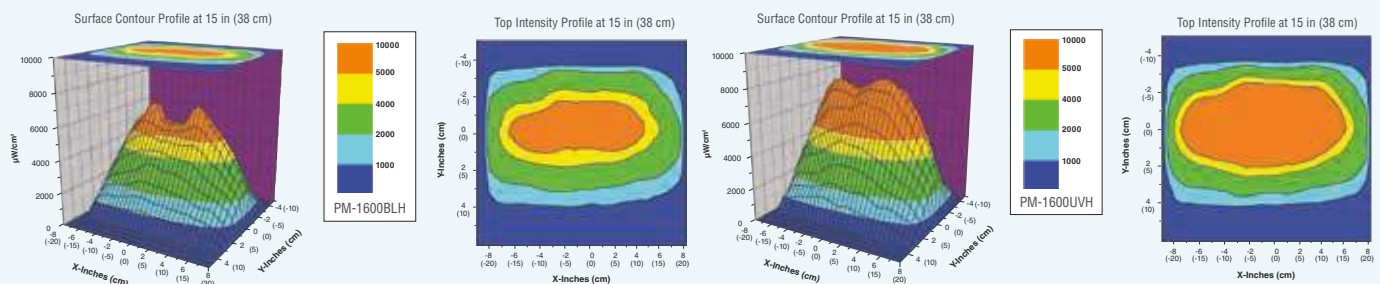


Visible Light Measurement	< 2 foot-candles (22 lux)
Light Source	16 LEDs UV-A (365 nm)
Lamp Style	Panel flood lamp
Dimensions (W x L x H)	5.5 x 13.75 x 6 in (14 x 35 x 15 cm)
Weight	9 lbs (4 kgs)
Power Requirements	AC power (main AC power cord supplied with the unit) (Available in 120V, 230V, 240V and 100V versions)
Cooling System	Built-in fans

Replacement Parts and Accessories

IMAGE	PART #	DESCRIPTION	IMAGE	PART #	DESCRIPTION
	127918	Particulate air filter		CP-100	Top connecting plate for ganging lamps longitudinally
	127935	Retainer LED assembly face plate		CP-200	Top connecting plate for ganging lamps back-to-back (2 required)
	128177	AC power cord		CP-300	Side connecting bracket for ganging lamps longitudinally (2 required)
	BF-365PM	Black light filter assembly		UL-110	Long lasting UV-A lens
	CC-200	Connector cable for ganging lamps		UVS-30	UV-absorbing spectacles
	CF-100	Clear glass filter assembly			

High Intensity UV-A Beam Profiles



QDR-365 S-SERIES QUADRAN™ 365

LED UV-A Broad Beam Handheld Lamps

Mobile, battery-pack operated versions available.

Spectroline® QUADRAN S-Series features two different variations to best suit your specific NDT requirements, with and without integral black light filters.

MEETS
SPECIFICATIONS
OF



EN ISO:3059

127944
**STANDARD
FACEPLATE***



128094
FACEPLATE*
with integral black
light filters

**LONG-LASTING
UV-A LENSES**
reduce the rate of
solarization

WHITE LIGHT LED
allows for scanning
surface flaws

FACEPLATE*
with or without integral
black light filters

RUBBER BUMPER
with Borofloat® glass
lens protects LEDs
from damage

IN-LINE INSPECTION
lamp handle pin receptacle
allows for easy mounting
attachments

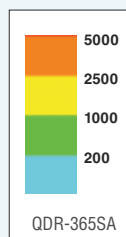
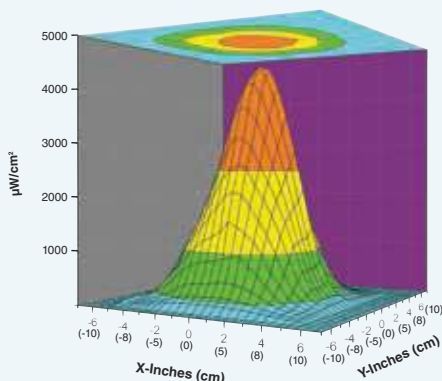
BUILT-IN FANS
maintain optimum
light output



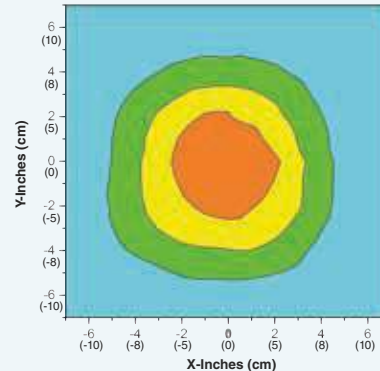
EASY CONTROL
TWO intensity settings for
white Light LED – high and low

UV-A Beam Profile

Surface Contour Profile at 15 in (38 cm)



Top Intensity Profile at 15 in (38 cm)



Series Lamp Comparisons

QUADRAN™	PART #	INTEGRAL BLACK LIGHT FILTER	NOMINAL STEADY-STATE UV-A INTENSITY at 15 in (38 cm) ①	UV-A COVERAGE AREA at 15 in (38 cm) at minimum 1,200 µW/cm²
365 Series	QDR-365SA		4,500 µW/cm²	6.5 in (16.5 cm)
365 Series <i>AC/DC Mobile Versions</i>	QDR-365MSA		4,500 µW/cm²	6.5 in (16.5 cm)
	QDR-365MSBLA	●	4,500 µW/cm²	6.5 in (16.5 cm)

① UV-A intensity reading taken with the Spectroline® AccuMAX™ Series meter, and is factory set to the value shown.



Technical Features

Visible Light Measurement	< 2 foot-candles (22 lux)
Light Source	4 LEDs UV-A (365 nm), 1 white light LED
Lamp Style	Pistol grip
Lamp Head Dimensions (W x H)	6 x 5.5 in (15 x 14 cm)
Length	10 in (25 cm)
Weight	3 lbs (1.36 kg)
White Light LED Intensity	High setting: 300 foot-candles (3,229 lux) Low setting: 10 foot-candles (108 lux)
Power Requirements	100-120VAC / 12VDC (Also available in 230V & 240V versions)
Battery Pack	Type: 12V, NiMH (rechargeable) Run time: 3.5 hours continuous Charge time: 2 hours
Cooling System	Built-in fans

Replacement Parts and Accessories

IMAGE	PART #	DESCRIPTION	IMAGE	PART #	DESCRIPTION
	127922	Particulate filter assembly		FA-100	Flexible arm
	127944	Standard faceplate		FP-550	Rubber bumper with Borofloat® glass
	128094	Faceplate with integral black light filters		PS-200A	Industrial power supply. primary cord: 8 feet (2.4 m); secondary cord: 20 feet (6.1 m).
	129141	Standard, 8-foot (2.4 m) AC power cord		PS-300A	In-line power supply. primary cord: 8 feet (2.4 m); secondary cord: 8 feet (2.4 m).
	129145	Extra-long 20 foot (6.1 m) AC power cord		PSA-250A	AC/DC power supply adapter for "M" series lamps
	129162	3.5 foot (1.1 m) DC power cord for "M" series lamps		UL-110	Long lasting UV-A lens
	B-6*	Bench mount		UVS-30	UV-absorbing spectacles
	BP-30	Battery pack with 12V rechargeable NiMH battery		W-6*	Bench mount with pin
	BR-150A	Smart AC charger		WM-100*	Wall mounting bracket
	CC-400	Padded carrying case			

* Must be used in conjunction with LH-300A for connecting

QUADRAN™ 365 MS-SERIES

Portable, battery-operated AC/DC lamp kits. Include QUADRAN™ 365 LED UV-A lamp, rechargeable NiMH battery pack, power supply adapter with AC/DC cord sets, smart AC charger, UV-absorbing spectacles and padded carrying case.



INCHES

-7 -6 -5 -4 -3 -2 -1

PowerMAX™ 365 SERIES 15 x 6 in (38 x 15 cm)

uVision™ 365 UV-365EH 7 in (17.78 cm)
TRITAN™ 365 TRI-365HB 6.5 in (16.5 cm)
QUADRAN™ 365 QDR-365SC 6 in (15 cm)
TRITAN™ 365 TRI-365SBLC 5.5 in (14 cm)
OPT-LUX™ 365 SERIES 2.5 in (6.3 cm)

CENTIMETERS

-170 -160 -150 -140 -130 -120 -110 -100 -90 -80 -70 -60 -50 -40 -30 -20 -10

0 1 2 3 4 5 6 7 INCHES

SHINE
YOUR
SPECTROLINE®
LAMPS

0 10 20 30 40 50 60 70 80 90 100 110 120 130 140 150 160 170 CENTIMETERS

TRI-365 SERIES TRITAN™ 365

LED UV-A Handheld NDT Inspection Lamps

Mobile, battery-pack operated versions available.

Available in three models to meet your specific NDT inspection requirements: AC high-intensity and standard-intensity, and AC/DC standard-intensity with integral black light filters.

MEETS
SPECIFICATIONS
OF



EN ISO:3059

**LONG-LASTING
UV-A LENSES**
reduce the rate of
solarization

WHITE LIGHT LED
allows for scanning
surface flaws

FACEPLATE*
with or without integral
black light filters

RUBBER BUMPER
with Borofloat® glass
lens protects LEDs
from damage

BUILT-IN FANS
maintain optimum
light output



127955
**STANDARD
FACEPLATE***



128196
FACEPLATE*
with integral
black light filters



Series Lamp Comparisons

TRITAN™	PART #	HIGH INTENSITY	STANDARD INTENSITY	INTEGRAL BLACK LIGHT FILTER	NOMINAL STEADY-STATE UV-A INTENSITY at 15 in (38 cm) ①	UV-A COVERAGE AREA at 15 in (38 cm) at minimum 1,200 µW/cm²
365 Series <i>Versions</i>	TRI-365HB	●			9,000 µW/cm²	6.5 in (16.5 cm)
	TRI-365DB*		●		< 5,000 µW/cm²	5.5 in (14 cm)
365 Series <i>AC/DC Mobile Versions</i>	TRI-365MHB	●			9,000 µW/cm²	6.5 in (16.5 cm)
	TRI-365MDB*		●		< 5,000 µW/cm²	5.5 in (14 cm)
	TRI-365MDBB*		●	●	< 5,000 µW/cm²	5.5 in (14 cm)

*These versions are “tuned” to ensure that they provide a maximum steady-state UV-A intensity of less than 5,000 µW/cm² at 15 in (38 cm)

① UV-A intensity reading taken with the Spectroline® AccuMAX™ Series meter, and is factory set to the value shown.

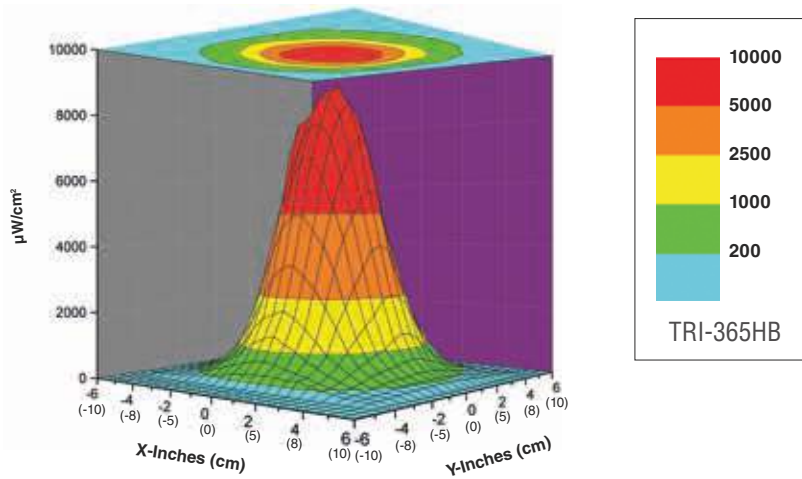


Technical Features

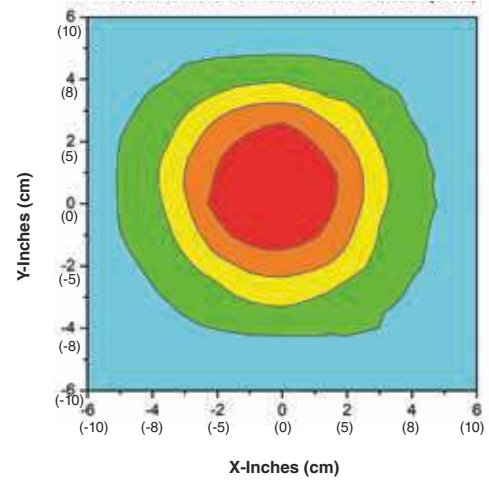
Visible Light Measurement	< 2 foot-candles (22 lux)
Light Source	3 LEDs UV-A (365 nm), 1 white light LED
Lamp Style	Pistol grip
Lamp Head Diameter	3.25 in (8.25 cm)
Length	8 in (20.3 cm)
Weight	1 lb (454 g)
White Light LED Intensity	400 foot-candles (4,306 lux)
Power Requirements	100-120VAC / 12VDC (Also available in 230V & 240V versions)
Battery Pack	Type: 12V, NiMH (rechargeable) Run time: 3.5 hours continuous Charge time: 2 hours
Cooling System	Built-in fans

High Intensity UV-A Beam Profile

Surface Contour Profile at 15 in (38 cm)

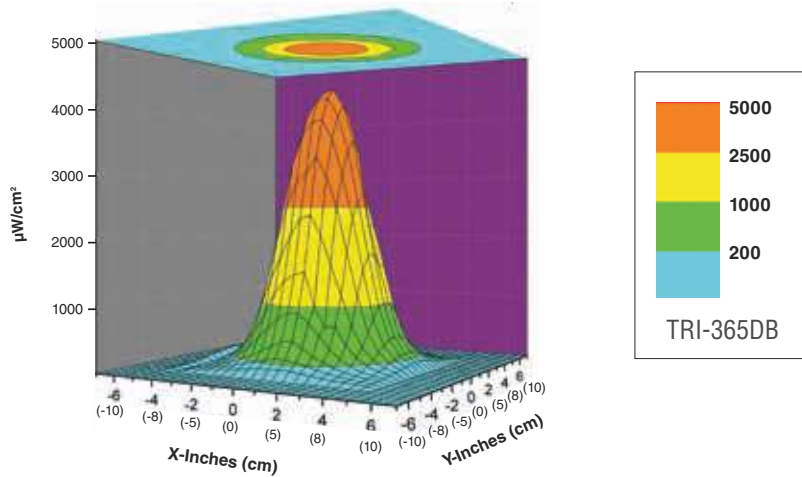


Top Intensity Profile at 15 in (38 cm)

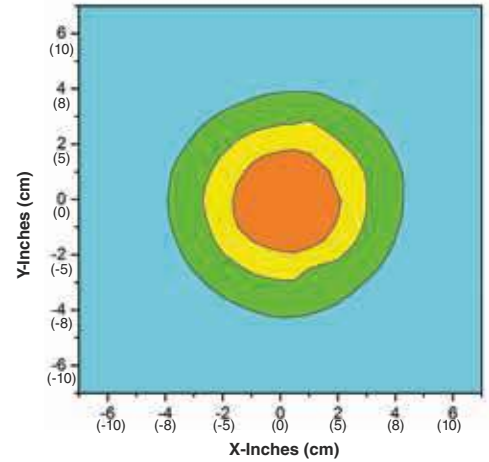


Standard Intensity UV-A Beam Profiles

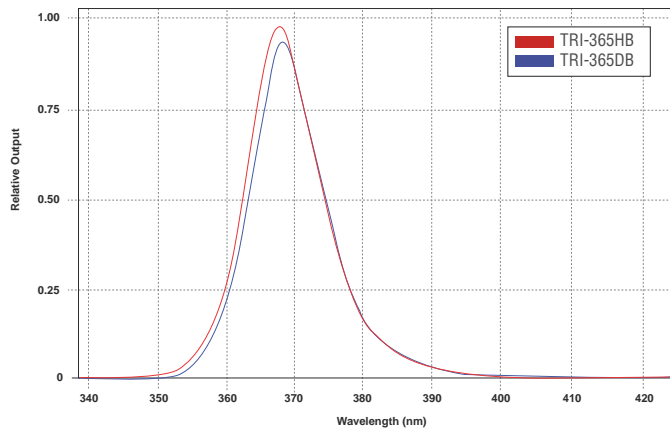
Surface Contour Profile at 15 in (38 cm)



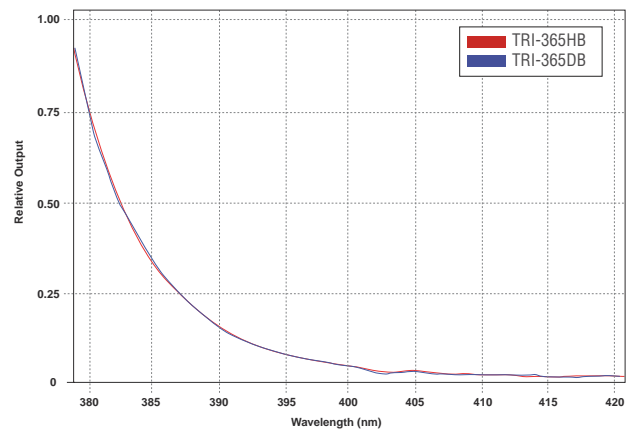
Top Intensity Profile at 15 in (38 cm)



Normalized UV Irradiance



Select Wavelength With and Without Black Light Filter





TRITAN™ 365 M-SERIES

Portable, battery-operated AC/DC lamp kits. Include TRITAN™ 365 LED UV-A (365 nm) lamp, rechargeable NiMH battery pack, power supply adapter with AC/DC cord sets, smart AC charger, UV-absorbing spectacles and padded carrying case.



TRITAN™ 365
PS-200A
Industrial Power Supply



TRITAN™ 365
PS-300A
In-Line Power Supply

Replacement Parts and Accessories

IMAGE	PART #	DESCRIPTION	IMAGE	PART #	DESCRIPTION
	127933	Particulate filter assembly		CC-370A	Padded carrying case
	127955	Standard faceplate		FP-365	Rubber bumper with Borofloat® glass
	128196	Faceplate with integral black light filters		PS-200A**	Industrial power supply / primary cord: 8 feet (2.4 m); secondary cord: 20 feet (6.1 m).
	129141	Standard 8 foot (2.4 m) AC power cord		PS-300A**	In-line power supply / primary cord: 8 feet (2.4 m); secondary cord: 8 feet (2.4 m).
	129145	Extra-long 20 foot (6.1 m) AC power cord		SA-250A	AC/DC power supply adapter for "M" series lamps
	129162	3.5 foot (1.1 m) DC power cord for "M" series lamps		UL-110	Long lasting UV-A lens
	B-6*	Bench mount		UVS-30	UV-absorbing spectacles
	BP-30	Battery pack with 12V rechargeable NiMH battery		W-6*	Bench mount with pin
	BR-150A	Smart AC charger		WM-100*	Wall mounting bracket

* Must be used in conjunction with LH-300A for connecting

** Available in 100-120V, 230V and 240V versions

UV-365 STANDARD SERIES

uVision™ 365

IP Rated, Compact, Powerful LED UV-A Inspection Lamps

Compact, cost-effective handheld inspection lamps. Available in two models to suit your specific needs: **standard intensity & high intensity**. For any fluorescent inspection application requiring UV-A light.

MEETS
SPECIFICATIONS
OF



EN ISO:3059

FOR FLUORESCENT INSPECTION IN ANY INDOOR / OUTDOOR ENVIRONMENT

3 LEDs UV-A
for wide area of coverage

WHITE LIGHT LED
allows for scanning surface flaws

LONG-LASTING UV-A LENSES
Reduce the rate of solarization

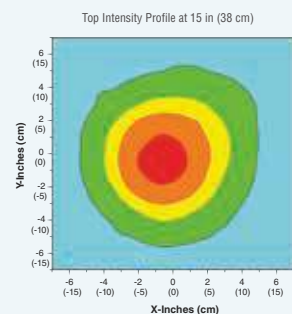
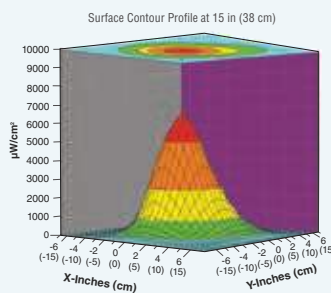
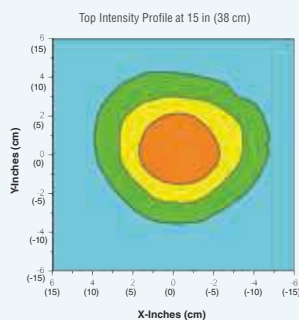
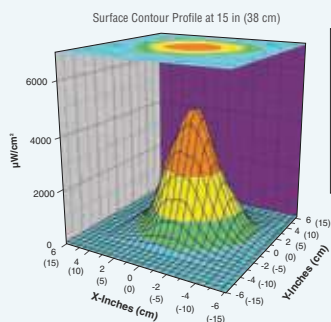
EASY CONTROL
grip-mounted, three-way rocker switch (white light/off/UV)

FANLESS DESIGN
maintains optimum lamp temperature and will never break down

PISTOL GRIP
comfortable, balanced control



UV-A Beam Profiles



**IP65
RATED****Dust Tight &
Water Resistant****Fanless &
Cool Running****Lightweight
& Rugged**

PART #	NOMINAL STEADY-STATE UV-A INTENSITY at 15 in (38 cm) ①	VISIBLE LIGHT MEASUREMENT	UV-A COVERAGE AREA at 15 in (38 cm) at minimum 1,200 $\mu\text{W}/\text{cm}^2$
UV-365ES*	4,700 $\mu\text{W}/\text{cm}^2$	< 1 foot-candle (11 lux)	6 in (15.24 cm) Diameter
UV-365EH*	7,000 $\mu\text{W}/\text{cm}^2$	< 1 foot-candle (11 lux)	7 in (17.78 cm) Diameter

① UV-A intensity reading taken with the Spectroline® AccuMAX™ Series meter, and is factory set to the value shown.

*Each lamp is fitted with an 8-foot cord and the appropriate plug for the country of destination. An optional 20-foot cord is available. The "/20" suffix denotes the 20-foot power cord options.



Technical Features

Light Source	3 LEDs UV-A (365 nm), 1 white light LED
Lamp Style	Pistol grip
Lamp Head Diameter	3." in (+ cm)
Length	7." in (19 cm)
Weight	1.7 lb (0.77 kg)
White Light LED Intensity	400 foot-candles (4,306 lux)
Power Requirements	100-120VAC / 12VDC (Also available in 230V & 240V versions)

Replacement Parts and Accessories

IMAGE	PART #	DESCRIPTION	IMAGE	PART #	DESCRIPTION
	130206**	Standard 8 foot (2.4 m) AC power cord (100-120V / 50-60Hz)		FP-600	Borofloat® filter protector
	130210**	Extra-long 20 foot (6.1 m) AC power cord (100-120V / 50-60Hz)		UL-110	Long lasting UV-A lens
	CC-370A	Padded carrying case		UVS-30	UV-absorbing spectacles
	B-6*	Bench mount		W-6*	Bench mount with pin
	FA-100	Flexible arm		WM-100*	Wall mounting bracket

* Must be used in conjunction with LH-300A for connecting

** Available in 100-120V, 230V and 240V versions

OPX-450 OPTIMAX™ 450

Rechargeable LED Blue Light Flashlight

This versatile, cordless inspection lamp features a high-intensity LED blue light (450 nm), a black anodized lamp body and our patented, thin-film dichroic lens to filter out long-wave visible light.

**MEETS
SPECIFICATIONS
OF**



DIN CEN/TR 16638



**PERFECT FOR SMALL
SPACE INSPECTIONS
FOR MPI WHILE OUT
IN THE FIELD - EVEN
IN DAYLIGHT!**

**ELECTRONIC INTENSITY
STABILIZER**
assures consistent performance

**CONVENIENT
ON/OFF SWITCH**
for easy one-handed
operation

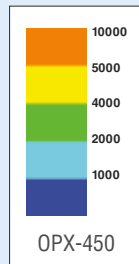
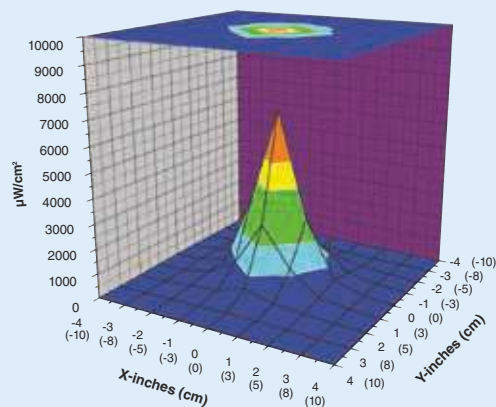
**PATENTED,
THIN-FILM
DICHROIC LENS**
improve contrast and
fluorescent response

**ANODIZED ALUMINUM
LAMP BODY**
minimizes corrosion and stands up
to years of heavy use

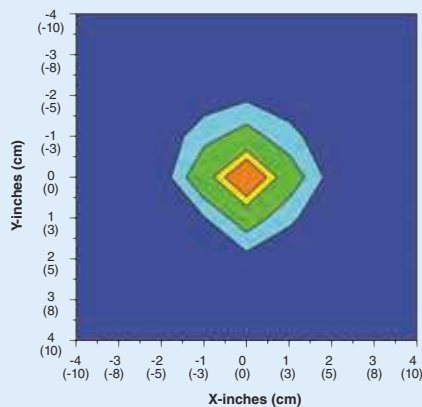


Blue Light Beam Profile

Surface Contour Profile at 15 in (38 cm)

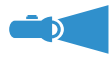


Top Intensity Profile at 15 in (38 cm)





Rechargeable
NiMH Battery



Bright &
Uniform Beams



Instant-on
Operation



90 Minutes
Run Time

Technical Features

NOMINAL STEADY-STATE BLUE LIGHT INTENSITY at 15 in (38 cm) ❶	VISIBLE LIGHT MEASUREMENT	LIGHT SOURCE	LAMP HEAD DIAMETER	
7,000 μW/cm²	< 0.5 foot-candles (5 lux)	LED Blue light (450 nm)	2.0 in (5.1 cm)	
LENGTH	WEIGHT (WITH BATTERY)	POWER REQUIREMENTS	CHARGE TIME	LAMP STYLE
8 in (20.3 cm)	11.8 oz (335 g)	3.6V, 2.0Ah NiMH internal battery stick (rechargeable)	4 hours	Cordless flashlight

① Blue Light intensity reading taken with the Spectroline® AccuMAX™ Series meter, and is factory set to the value shown.



Replacement Parts and Accessories

IMAGE	PART #	DESCRIPTION	IMAGE	PART #	DESCRIPTION
	125608	Battery stick with tail-cap		RB-300	Smart AC charger (120V/60Hz)*
	127243	Belt holder		RB-300DC	12V DC charger
	CC-365	Hard carrying case		UVS-40	Fluorescent-enhancing spectacles, yellow

*Also available in 230V, 240V, and 100V versions

OPX-450 OPTIMAX™ 450 Kit

comes complete with OPTIMAX™ 450 LED blue light lamp, smart AC and DC chargers, fluorescent-enhancing yellow spectacles, belt holder and rugged, padded carrying case.



ONT-450 On-Trak™ 450

LED Blue Light Modular Track Lighting Systems

The ONT-450 On-Trak™ is an innovative, modular, track light-style inspection system. It features four broad-beam lamps, each of which utilizes three powerful LEDs blue light (450 nm). This overhead lighting system provides a fast, safe and effective alternative to UV-A light. It allows inspectors to customize lamp beam patterns to suit their individual needs, and provides the ability to add two additional lamp head assemblies to further increase the coverage area.

**MEETS
SPECIFICATIONS
OF**



DIN CEN/TR 16638



**WORKS IN
DAYLIGHT!**



Optional remote control with two-position rocker switch adds convenience and versatility

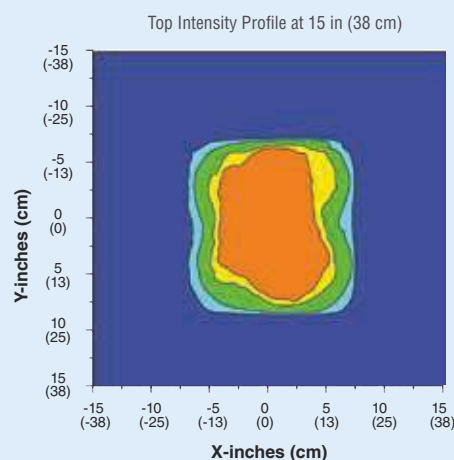
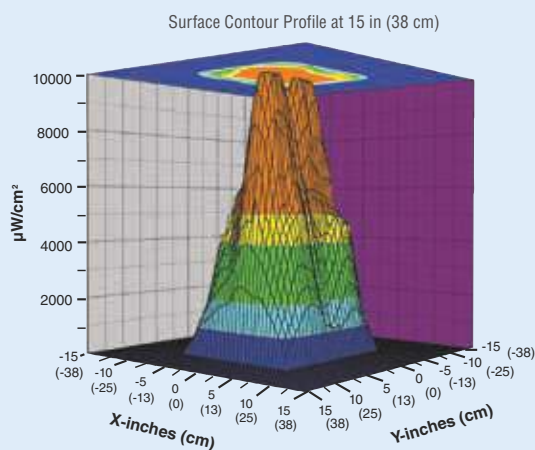
BUILT-IN FANS
maintain optimum
light output

FILTER PROTECTORS
with rubber bumper and
borofloat® glass lens

**3 LEDs BLUE LIGHT
PER LAMP HEAD**
for wide area of coverage

**PATENTED, THIN-FILM
DICHROIC LENS**
improve contrast and fluorescent
response

Blue Light Beam Profile





**Very Broad
Coverage Area**



**Cool
Running**



**Large Parts
Inspection**



Customizable

Technical Features

NOMINAL STEADY-STATE BLUE LIGHT INTENSITY at 15 in (38 cm) ①	LIGHT SOURCE	POWER SUPPLY	POWER SUPPLY CORD
7,000 $\mu\text{W}/\text{cm}^2$	3 LEDs Blue light (450 nm) per lamp head	Input: 100-240VAC 50/60Hz Output: 12VDC	8 ft (2.4 m)
SYSTEM DIMENSIONS (L X W X H)	LAMP DIMENSIONS	PLATFORM DIMENSIONS (L X W X H)	PLATFORM WEIGHT
28.5 x 18.3 x 11 in (72 x 46 x 28 cm)	Head diameter: 3.25 in (8.3 cm) Length: 9.5 in (24 cm)	28.5 x 18.3 x 2.5 in (72 x 46 x 6 cm)	13 lb (5.9 kg)

① Blue Light intensity reading taken with the Spectroline® AccuMAX™ Series meter, and is factory set to the value shown.



Replacement Parts and Accessories

IMAGE	PART #	DESCRIPTION	IMAGE	PART #	DESCRIPTION
	AF-200	Air filter (package of 24)		PT-200	Platform and track assembly
	FP-200	Filter protector with rubber bumper and dichroic lens		RC-300	AC remote control with 8 foot (2.4m) cord
	LA-450	(1) Lamp head assembly with (3) blue light LEDs, AF-200 air filter and FP-200 filter protector		UVS-40	Fluorescence-enhancing spectacles, yellow
	PS-100A	AC power supply module (100-240V / 50-60Hz)			



PM-1600B PowerMAX™ 450

LED Blue Light Flood Panel Lamp

PowerMAX™ 450 flood lamp features a panel of 16 powerful LEDs blue light (450 nm) specially engineered for non-destructive testing applications when limiting the use of UV-A light is a requirement. This versatile, stationary light source can be installed overhead or in-line, and can be ganged together to provide an even wider coverage area.

**MEETS
SPECIFICATIONS
OF**



DIN CEN/TR 16638



**WORKS IN
DAYLIGHT!**

**EASILY
MOUNTABLE**
for overhead inspection
or in-line applications

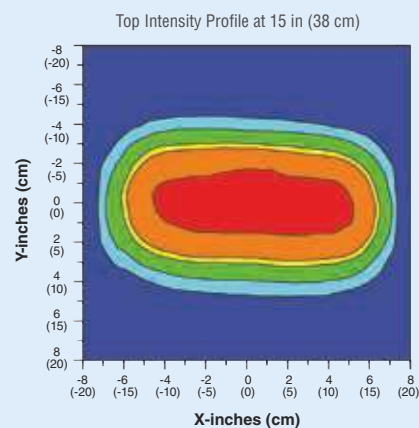
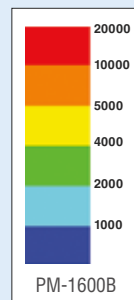
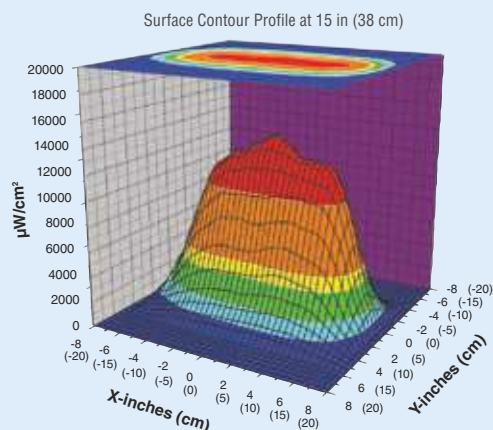
BUILT-IN FANS
maintain optimum
light output



**PATENTED,
THIN-FILM
DICHROIC LENS**
improve contrast and
fluorescent response

**16 LEDs BLUE
LIGHT**
provide large area
of coverage

Blue Light Beam Profile



Ideal for:

NDT
Inspection
BoothsFluorescent
Penetrant and
Magnetic Particle
InspectionLarge Parts
InspectionCustomizable/
Gangable

Technical Features

NOMINAL STEADY-STATE BLUE LIGHT INTENSITY at 15 in (38 cm) ❶	BLUE LIGHT COVERAGE AREA at 15 in (38 cm) at minimum 2,000 μW/cm²		VISIBLE LIGHT MEASUREMENT	LIGHT SOURCE
10,000 μW/cm²	18 x 8 in (46 x 20 cm)		< 1 foot-candles (11 lux)	16 LEDs Blue light (450 nm)
DIMENSIONS (W x L x H)	WEIGHT	POWER REQUIREMENTS	COOLING SYSTEM	LAMP STYLE
5.5 x 13.75 x 6 in (14 x 35 x 15 cm)	9 lbs (4 kgs)	AC power (main AC power cord supplied with the unit) (Available in 120V, 230V, 240V and 100V versions)	Built-in fans	Panel flood lamp

① Blue light intensity reading taken with the Spectroline® AccuMAX™ Series meter, and is factory set to the value shown.



Replacement Parts and Accessories

IMAGE	PART #	DESCRIPTION	IMAGE	PART #	DESCRIPTION
	127918	Particulate air filter		CP-100	Top connecting plate for ganging lamps longitudinally
	127935	Retainer LED assembly face plate		CP-200	Top connecting plate for ganging lamps back-to-back (2 required)
	128177	AC power cord		CP-300	Side connecting bracket for ganging lamps longitudinally (2 required)
	CC-200	Connector cable for ganging lamps		UVS-40	Fluorescence-enhancing spectacles, yellow
	CF-100	Clear glass filter assembly			



For applications requiring extremely large coverage areas, the PowerMAX™ 450 can be quickly ganged together longitudinally (left) or back-to-back (right) using customized, easy-to-install connecting plates and brackets.



TRI-450B SERIES TRITAN™ 450

LED Blue Light Handheld Inspection Lamps

Mobile, battery-pack operated versions available.

Feature three cool-running, ultra-high flux LEDs blue light (450 nm) with a broad-beam configuration. This powerful lamp provides a wider coverage area than conventional inspection lamps, while its compact head design allows access into areas inaccessible to larger inspection lamps. Ideal for most non-destructive testing applications, including use in some ambient light conditions!

**MEETS
SPECIFICATIONS
OF**



DIN CEN/TR 16638



**WORKS IN
DAYLIGHT!**

RUBBER BUMPER WITH PATENTED, THIN-FILM DICHROIC LENS

protects LEDs from damage
and improves contrast and
fluorescent response

**3 LEDs BLUE
LIGHT**
for wide area of
coverage

BUILT-IN FANS
maintain optimum
light output



Also Available:

TRI-450MB TRITAN™ 450MB Kit

Portable, battery-operated AC/DC lamp kit. Includes TRITAN™ 450 LED blue light lamp, rechargeable NiMH battery pack, power supply adapter with AC/DC cord sets, smart AC charger, fluorescent-enhancing, yellow spectacles and soft, lightweight carrying case.



Technical Features

NOMINAL STEADY-STATE BLUE LIGHT INTENSITY at 15 in (38 cm) ①	BLUE LIGHT COVERAGE AREA at 15 in (38 cm) at minimum 2,000 $\mu\text{W}/\text{cm}^2$	LIGHT SOURCE	POWER REQUIREMENTS
9,500 $\mu\text{W}/\text{cm}^2$	5 in (13 cm) Diameter	3 LEDs Blue light (450 nm)	TRI-450B: 100-120VAC TRI-450MB: 100-120VAC/12VDC (Also available in 230V & 240V versions)
LAMP HEAD DIAMETER	LENGTH	WEIGHT	LAMP STYLE
3.25 in (8.25 cm)	8 in (20.3 cm)	1 lb (454 g)	Pistol grip

① Blue Light intensity reading taken with the Spectroline® AccuMAX™ Series meter, and is factory set to the value shown.



Replacement Parts and Accessories

IMAGE	PART #	DESCRIPTION	IMAGE	PART #	DESCRIPTION
	127933	Particulate filter assembly		CC-370A	Padded carrying case
	129141	Standard 8 foot (2.4 m) AC power cord		FP-450	Rubber bumper with dichroic lens
	129145	Extra-long 20 foot (6.1 m) AC power cord		PS-200A*	Industrial power supply / primary cord: 8 feet (2.4 m); secondary cord: 20 feet (6.1 m).
	129162	3.5 foot (1.1 m) DC power cord for "M" series lamps		PS-300A*	In-line power supply / primary cord: 8 feet (2.4 m); secondary cord: 8 feet (2.4 m).
	BP-30	Battery pack with 12V rechargeable NiMH battery		PSA-250A	AC/DC power supply adapter for "M" series lamps
	BR-150A	Smart AC charger		UVS-40	Fluorescent-enhancing spectacles, yellow

* Available in 230V and 240V versions

ML-3500 SERIES MAXIMA™

Ultra-High Intensity UV-A Lamps

These super-powerful lamps make NDT inspections easier, safer and more reliable. They feature micro discharge light (MDL) technology with a fatigue-free ergonomic design. Deliver up to 10 times the UV-A output of conventional HID inspection lamps.



**EXTRA WIDE
COVERAGE**



**VERY BRIGHT
BEAMS**

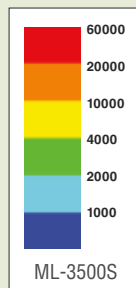
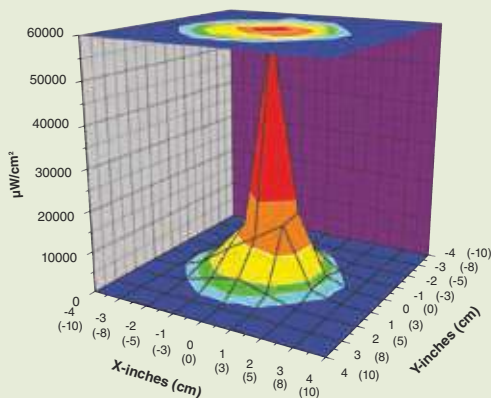


**WORKS IN
DAYLIGHT!**

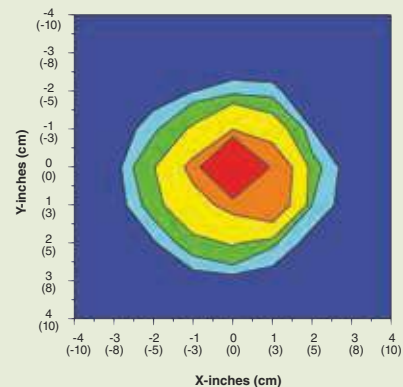


UV-A Beam Profile

Surface Contour Profile at 15 in (38 cm)



Top Intensity Profile at 15 in (38 cm)



Series Lamp Comparisons

MAXIMA™	PART #	ULTRA HIGH INTENSITY	SPOT VERSION	FLOOD VERSION	NOMINAL STEADY-STATE UV-A INTENSITY at 15 in (38 cm) ①	UV-A COVERAGE AREA at 15 in (38 cm) at minimum 1,200 $\mu\text{W}/\text{cm}^2$
3500 Series Versions	ML-3500S	●	●		50,000 $\mu\text{W}/\text{cm}^2$	6 in (15 cm)
	ML-3500PRS	●	●		14,000 $\mu\text{W}/\text{cm}^2$	6 in (15 cm)
	ML-3500FL	●		●	4,500 $\mu\text{W}/\text{cm}^2$	6 in (15 cm)
3500 Series AC/DC Mobile Versions	ML-3500MS	●	●		50,000 $\mu\text{W}/\text{cm}^2$	6 in (15 cm)

*These versions are “tuned” to ensure that they provide a maximum steady-state UV-A intensity of less than 5,000 $\mu\text{W}/\text{cm}^2$ at 15 in (38 cm)

① UV-A intensity reading taken with the Spectroline® AccuMAX™ Series meter, and is factory set to the value shown.



Replacement Parts and Accessories

IMAGE	PART #	DESCRIPTION
	119584	MDL bulb, 35 watt
	2F350	UV diffusing filter
	2F958	UV filter
	BLE-35RA	MDL bulb/coated spot reflector assembly
	BLE-35RAF	MDL flood bulb/reflector assembly
	BLE-36PRA	MDL bulb/polished spot reflector assembly



ML-3500MS

NOTE:

All models come standard with 8 foot (2.4 m) primary and secondary cords

UV-400 SERIES SUPERFLOOD™

Powerful UV-A Flood Lamps

These super-powerful and versatile lamps have been specially engineered for fluorescent penetrant and magnetic particle inspection, parts degreasing inspections and wash station inspections.

TWIN-FILTER SYSTEM

Eliminates hazardous UV-B and UV-C radiation escaping from lamp

POWERFUL

400-watt metal halide bulb with tempered, heat-resistant low solarization UV filters



EASY BUILT-IN MOUNT

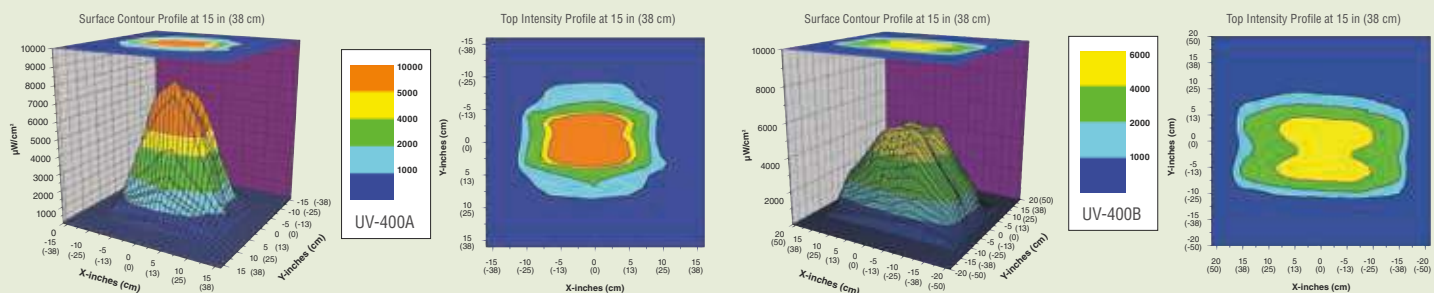
Mount over automated magnetic particle systems or above penetrant inspection booths

Series Lamp Comparisons



PART #	NOMINAL STEADY-STATE UV-A INTENSITY at 15 in (38 cm)	UV-A COVERAGE AREA at 15 in (38 cm) at minimum 2,000 $\mu\text{W}/\text{cm}^2$	UV-A COVERAGE TYPE
UV-400A	8,000 $\mu\text{W}/\text{cm}^2$	16 x 10 in (41 x 25 cm)	Features a concentrated-beam reflector designed to assure the highest concentrated UV-A intensity available
UV-400B	5,000 $\mu\text{W}/\text{cm}^2$	27 x 15 in (69 x 38 cm)	Features a unique broad-beam reflector designed to provide NDT inspectors with maximum uniformity of coverage over the largest area

UV-A Beam Profiles



VIVID™

UV-A LED Replacement Bulbs

Convert your mercury vapor HID lamp to modern LED technology.
Use with Spectroline® HID lamps instead of mercury vapor bulbs!

**COMES WITH PATENTED
BULB-SAVER™**

**KEEPS BULB UPRIGHT IN
HOUSING AND MAINTAINS
ALIGNMENT THROUGH USAGE,
INCREASING LONGEVITY.**



INSTANT-ON OPERATION

No wait time to get
to full intensity



FEWER BULB CHANGES



SAFER

Over 50% cooler!
225°F vs. 109°F
(HID) (LED)



ENVIRONMENTAL

Less environmental waste
with fewer bulbs and
energy efficient



BLE-LED-100



BLE-LED-150

INCLUDES
BULB
EXTENDER*
for BIB-150P
lamps (120V)


P/N *129585



BLE-LED-150/F

INCLUDES
BULB
EXTENDER*
for BIB-150P/F
lamps (230V)

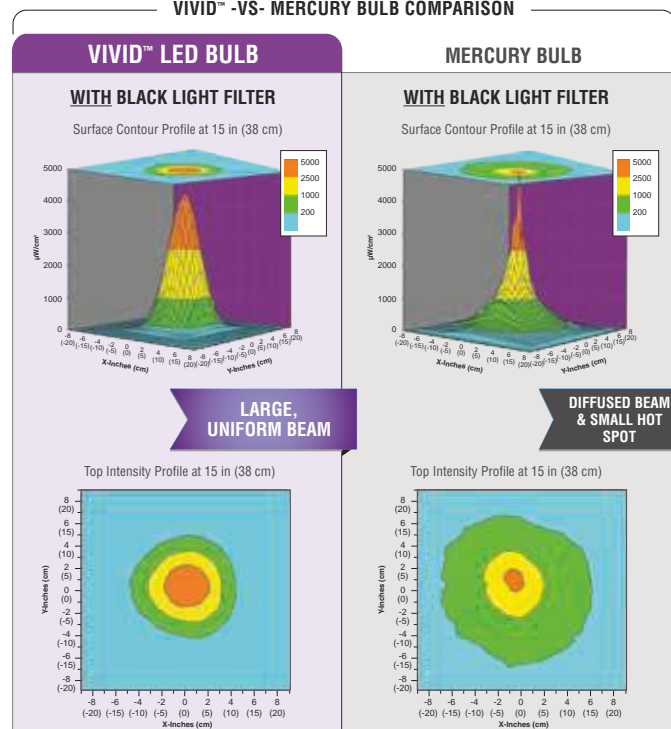
P/N *130245

PART #	NOMINAL STEADY-STATE UV-A INTENSITY at 15 in (38 cm)	UV-A COVERAGE AREA at 15 in (38 cm) at minimum 1,200 µW/cm²	VISIBLE LIGHT MEASUREMENT
BLE-LED-100 BLE-LED-150 BLE-LED-150/F	4,700 µW/cm² (with blacklight filter)	4.5 in (12 cm) Diameter	< 1 foot-candle (11 lux) 

Works **seamlessly** in conjunction with the
following Spectroline® HID lamps, saving you
both time and money on bulb changes:

LAMP	CURRENT BULB TYPE	REPLACEMENT VIVID BULB
SB-100P Series	100S/M HID Bulb	BLE-LED-100
FC-100 Series	100S/M HID Bulb	
BIB-150P Series	BLE-150CS-115/M	BLE-LED-150
	BLE-150BS-115/M	
	BLE-150CS-100/M	
BIB-150P/F Series	BLE-150CS-230/M	BLE-LED-150/F
FC-150/F Series	BLE-150FC-230/M	

VIVID™ -VS- MERCURY BULB COMPARISON



XP-2000/XP-4000

AccuPRO™ SERIES

Digital Radiometer/Photometer

Fast, Accurate Readings in the Palm of Your Hand

The **AccuPRO™** (XP-2000) readout unit features a single dual-wavelength sensor detector designed to measure both ultraviolet and visible light, and is compliant with ASTM 2297.

The **AccuPRO™ Plus** (XP-4000) features a single 3-in-1 multi-purpose sensor that measures ultraviolet, visible and blue light.



XP-2000
XP-4000



XP-2000
XP-4000



—
XP-4000



KEY FEATURES:

- ▶ Accurate readouts for UV-A, blue light, and irradiance as well as visible illuminance
- ▶ Overall accuracy greater than $\pm 5\%$ per NIST standards
- ▶ Superior band-pass interference filter provides excellent cosine response
- ▶ One-touch PEAK with reset functions
- ▶ User-defined power save and automatic shutoff
- ▶ Multi-wavelength sensor directly attached to meter by 3 ft (0.9 m) cord
- ▶ Convenient on-board recharging
- ▶ Powered by four rechargeable “AAA” nickel-metal hydride batteries (included)
- ▶ Comes complete with AC charger and padded carrying case

MULTILINGUAL – now includes more languages. User-selectable, multilingual display settings at any operational level. Choose from English, French, German, Chinese and Spanish.



Technical Features

Readout Unit	
Resolution	4-digit autoranging display
Screen	128 x 64 dot pixel chip on glass STN transmissive monochrome LCD 2.25 in (5.7 cm) diagonal illuminated (backlit)
Read Update	2 Hz
Overall Accuracy	Better than $\pm 5\%$ with reference to NIST standards
Temperature Coefficient	$\pm 0.025\%/^{\circ}\text{C}$ (0 to 50°C)
Power Requirements	Four "AAA" nickel-metal hydride batteries (rechargeable). AC charger included. <i>Available in 120V, 230V, 240V or 100V versions.</i>
Dimensions	
Length	6.0 in (15.2 cm)
Width	3.0 in (7.6 cm)
Thickness	1.0 in (2.5 cm)
Weight	8 oz (227 g)
Sensor Detector	
Length	3.0 in (7.6 cm)
Width	2.0 in (5.1 cm)
Thickness	0.5 in (1.3 cm)
Weight	5.6 oz (159 g)
Spectral Range	
UV-A Sensor	320-400 nm
Visible Sensor	460-675 nm
Blue Light Sensor	410-475 nm (XP-4000 only)

XP-2000 AccuPRO™

Dual Sensor (UV-A/VIS)

Sensitive to UV and Visible Light

Wavelength/Measurement Range

UV-A (365 nm) Irradiance 0-100 mW/cm²
Visible (555 nm) Illuminance 0-5,382 Lux (0-500 fc)

XP-4000 AccuPRO™ Plus

Conforms to CEN TR 16638

3-in-1 Sensor (UV-A/VIS/Blue)

Sensitive to UV, Visible and Blue Light

Wavelength/Measurement Range

UV-A (365 nm) Irradiance 0-100 mW/cm²
Visible (555 nm) Illuminance 0-5,382 Lux (0-500 fc)
Blue (450 nm) 0-100 mW/cm²



The **AccuPRO™** meter features a dual wavelength UV/visible sensor, while the **AccuPRO™ Plus** (shown) features a 3-in-1 sensor that measures UV, visible and blue light.



XRP-3000

AccuMax™ Digital Radiometer/Photometer

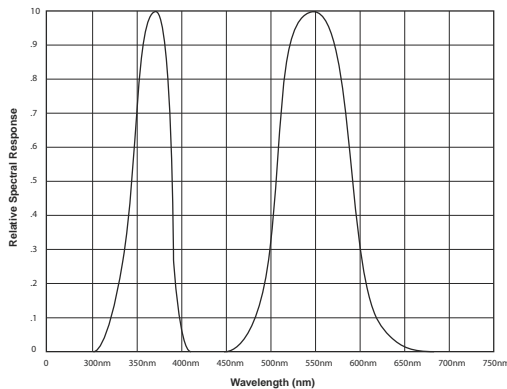
The MOST Advanced, Microprocessor-Controlled Readout System

The AccuMax™ XRP-3000 is compact, lightweight and battery-operated for convenient use in the factory, field or any other location where measurements need to be taken. A slide-out panel allows for easy replacement of the unit's 9-volt batteries.

**TESTED
TO COMPLY WITH**



ASTM 2297
Standard



**PROTECTIVE
RUBBER HOUSING**
rugged meter for better
grip and to help prevent
accidental breakage

LARGE LCD SCREEN
4-digit autoranging display

**DUAL-
WAVELENGTH
SENSOR
DETECTOR**
sealed with water-
resistant housing

KEY FEATURES:

- ▶ Microprocessor-controlled readout unit with dual-wavelength sensor detector
- ▶ Superior bandpass interference filter
- ▶ Choice of direct or USB connection between sensor detector and readout unit
- ▶ Excellent cosine response
- ▶ Sealed sensor housing and USB connection with water-resistant adapter

MULTILINGUAL – now includes more languages. User-selectable, multilingual display settings at any operational level. Choose from English, French, German, Chinese and Spanish.



AccuMAX™ XS-555/L Luminance Sensor

The perfect accessory for the AccuMAX Series meter. Ideal for technicians performing radiographic examinations. Meets ASTM E1742 standard.

The AccuMAX XS-555/L luminance sensor detector measures the brightness of a visible light source and, unlike many competitive units, allows the user the choice of displaying the results in three distinct units of measure: candelas per square meter (cd/m^2), candelas per square foot (cd/ft^2) and footlamberts (fL).



Technical Features

Readout Unit (XR-1000)	
Resolution	4-digit autoranging display
Screen	128 x 64 dot pixel chip on glass STN transmissive monochrome LCD 2.25 in (5.7 cm) diagonal illuminated (backlit)
Sample Rate	7.5 Hz (single sensor) 15 Hz (dual sensor)
Read Update	2 Hz
Overall Accuracy	Better than $\pm 5\%$ with reference to NIST standards
Temperature Coefficient	$\pm 0.025\%/^{\circ}\text{C}$ (0 to 50°C)
Power Requirements	Two 9V alkaline batteries (included)
Dimensions	
Length	7.75 in (19.7 cm)
Width	4.25 in (10.8 cm)
Thickness	1.25 in (3.2 cm)
Weight	0.8 lb (360 g)
Dual UV-A/Visible Sensor Detector (XDS-1000)	
Irradiance Range	
UV-A Sensor	0-100 mW/cm^2 (0-100,000 $\mu\text{W/cm}^2$)
Visible Sensor	0-5,300 lux (0-500 fc)
Spectral Range	
UV-A Sensor	320-400 nm
Visible Sensor	460-675 nm
Dimensions	
Length	4.75 in (12.1 cm)
Width	2.0 in (5.1 cm)
Thickness	7/8 in (2.2 cm)
Weight	0.22 lb (100 g)
USB Cable (Length)	5 ft (1.5 m)



Sample Certificates of Conformance & Validation Reports

Our NDT inspection lamps come with unique Certificates of Conformance and Validation Reports, so end-users know that their lamps meet industry requirements and standards.

Intensity readings are taken with a Spectroline® AccuMAX™ Series Meter, and is factory set to the value shown.



We stay one step ahead of industry trends and technological innovation to ensure you get the most rugged, comfortable, compliant lamps available today.

VALIDATION REPORT

MODEL NUMBER: TR-30558C
STANDARD: Rolls-Royce RRES 90061

SERIAL NUMBER:
PART NUMBER:

TEST DESCRIPTIONS	PARAMETERS	TYPE TEST - NOMINAL	UNIT TEST
Minimum Working Distance	5,000 µW/cm²	NA	NA
Maximum Working Distance	1,200 µW/cm²	NA	NA
Peak Wavelength	365 ± 5 nm	367 ± 2 nm	368 ± 2 nm
50% Max PW - 10 mm (P100%)	10 ± 1 mm	10 ± 1 mm	10 ± 1 mm
50% Max PW - 50 mm	5 ± 1 mm	5 ± 1 mm	5 ± 1 mm
10% Max PW - 100 mm	22 ± 1 mm	22 ± 1 mm	22 ± 1 mm
10% Max PW - 150 mm	10 ± 1 mm	10 ± 1 mm	10 ± 1 mm
Wavelength Shift	100nm to 370nm	Acceptable	Acceptable
Visible Light Output	<20 Lux at Minimum Dist <1 Lux at Maximum Dist	2.10 Lux (0.20 % at Min, 0.20 % at Max)	2.10 Lux (0.19 % at Min, 0.19 % at Max)
Output Stability	±5 % 20% Intensity Drop 20% Variation over 60 mins	NA	5 minutes 30 minutes
Ambient Temperature	10 degrees C to 50 degrees C	25 degrees C	50 degrees C
Source Life*	10,000 - 100,000 initial intensity 10,000 - 100,000 initial intensity	10,000 10,000 hours	NA NA

*Life is defined as average percent of factory tested intensity and 10,000 is defined as the percent of factory tested intensity. These figures are valid for the model provided that the lamp is operated in accordance with manufacturer's instructions and remains in normal working condition. Users should be knowledgeable in the technology in an effort that ensures the model is maintained correctly. The statement of these figures is not any warranty or standard warranty period beyond that stated in the manufacturer's Warranty Certificate included with each unit.

Inspector: Date:
Rolls-Royce - Quality Manager

955 Brush Hollow Rd, Westbury, NY 11590 • PHONE: 516-333-4840 • FAX: 516-333-4819 • WWW.SPECTROLINE.COM

CERTIFICATE OF CONFORMANCE

MODEL NUMBER: TR-30558C
STANDARD: ASTM E3022, Type A

SERIAL NUMBER:
PART NUMBER:

APPARATUS & MANUFACTURER	MODEL NUMBERS
UV-A Visible Meter (B.1)	Spectronics Corporation
Spectroradiometer (B.2)	StellarNet
Spectrophotometer (B.3)	StellarNet

LAMP ACCEPTANCE TEST (B.1)	Requirements	At Ambient: 77° (25 °C)
Maximum Irradiance (7.3)	At 15 inches (38 cm)	µW/cm²
Emission Spectrum (7.4.6)	Micro range 300-400nm	See Figure 1.0 - Pg. 2
Peak Wavelength (7.4.6.7)	360 to 370nm	nm
FWHM (7.4.6.8)	<17nm	nm
Longest Wavelength at Half Maximum (7.4.6.9)	<17nm	nm
UV-A LED Visible Light (555nm) at 15 in. (38cm)	<2 % (21 Lux)	% (Lux)
Visible LED Light (555nm) at 15 in. (38cm)	>200 % (1100 Lux)	% (Lux)

955 Brush Hollow Rd, Westbury, NY 11590 • PHONE: 516-333-4840 • FAX: 516-333-4819 • WWW.SPECTROLINE.COM

CERTIFICATE OF LIGHT OUTPUT

This is to certify the below referenced lamp meets the UV-A Lamp Output Measurements (Intensity and Wavelength) for 100 W UV-A light, producing a Peak Wavelength of 368 ± 2 nm (0.19 % at Min, 0.19 % at Max) as measured with a Spectroradiometer, in accordance with EN ISO 3059:2008 requirements.

Product Number:
Serial Number:

The following light measurements were obtained using a Spectronics Corporation AccuMAX 300-3000 and StellarNet, at 15" (38 cm) with detector-operated within at half distance:

UV-A LED Measurements - Measured Intensity

UV-A Intensity reading @ 15 inches: 6,200 ± 4,000 µW/cm²

Visible Light Intensity @ 15 inches: 1000 Lux (0.19 % at Min, 0.19 % at Max)

Visible Light Intensity @ 15 inches: 1000 Lux (0.19 % at Min, 0.19 % at Max)

Visible Light Intensity @ 15 inches: 1000 Lux (0.19 % at Min, 0.19 % at Max)

Inspector: Date:

955 Brush Hollow Rd, Westbury, NY 11590 • PHONE: 516-333-4840 • FAX: 516-333-4819 • WWW.SPECTROLINE.COM

Rolls-Royce RRES 90061

Fully serialized **Validation Reports** provided with all RRES 90061 compliant lamps.

ASTM E3022

Certificates of Conformance as defined by ASTM E3022 standard for emission characteristics and requirements for LED UV-A lamps are supplied with each lamp.

EN ISO:3059

Certificates of Light Output provided with each individual lamp with unique product serial number. These certify LED Wavelength requirements and output measurements for each lamp at the factory.

ISO 9001:2008

Compliance with the new ISO standard reinforces the confidence that customers have in Spectronics Corporation's commitment to quality, not only in the present but also in the future.

Warranty

All equipment is warranted against defects in manufacture. Spectronics Corporation's obligation under this warranty is limited to repairing or replacing, at the option of Spectronics Corporation, any part(s) of the product which, if properly installed, used and maintained, proves upon factory examination to have been defective in materials or workmanship within 12 months from the date of delivery to the customer, including LEDs and BLE-LED bulbs.

This warranty does not apply to any component which (1) is normally consumed in operation or (2) has a normal life inherently shorter than the warranty stated. For example, bulbs, filters and rechargeable batteries are warranted for 30 days; the 100S/M-PQL bulb is warranted for 90 days. In addition, Spectronics Corporation does not warrant any instrument that has been subjected to misuse, negligence or accident, or has been repaired or altered by anyone other than Spectronics Corporation.

This warranty is in place of all other warranties of quality. There are no other warranties either oral, written, express, implied or statutory. IMPLIED WARRANTIES OF FITNESS FOR PURPOSE AND MERCHANTABILITY ARE EXCLUDED. This warranty and your remedies thereunder are solely as stated in this form. In no event shall Spectronics Corporation be liable for special, indirect, incidental or consequential damages, nor for any damages arising out of delay in shipment or production.

Product Specifications

Spectronics Corporation reserves the right to alter product specifications without notice. Spectronics is under no obligation to make similar changes in its products previously produced.



Order
Information



Technical
Assistance



Local Sales
Representatives



Authorized
Distributors

Product/Customer Support & Technical Assistance

Product literature, instructions and a full staff of trained customer service representatives and technical service engineers are available for support. Additional product information and support are available on our website.



Place an Order:
Orders@Spectroline.com



Get Support:
CustomerService@Spectroline.com
or call (516) 333-4840



See More:
Scan QR Code

IMAGINING FOR TOMORROW:

We are excited to release several new, in-demand products very soon.
Have some feedback or product ideas? Please reach out – we would love to hear from you.
Email our team at marketing@spectroline.com

Company Background

Since 1955, Spectronics Corporation has been **the industry leader of inventing and manufacturing fluorescent dyes and materials**. More than six decades since its inception, the goal of Spectronics is still the same — to produce effective, top-quality products that are on the cutting edge of today's technology with the utmost dedication to customer satisfaction.

Our NDT product line is no exception. We have worked alongside NDT experts, engineers, product designers, and standards committee members to carefully develop our new compliant lamps to meet the highest standards.



SPECTRONICS HEADQUARTERS, WESTBURY NY



PROUD MEMBERS OF:



www.spectroline.com

956 Brush Hollow Rd, Westbury, NY 11590 USA
800-274-8888 • 516-333-4840

FOLLOW US:



NDT
05/17 A09028-12
PRINTED IN USA

