

Choose the Original
Choose Success!

FORM+TEST
PRÜFSYSTEME

BASIC-LINE

Compression Testing Machine

ALPHA 3-2000 AD

- accuracy acc. to DIN EN ISO 7500-1, class 1
- execution acc. to EN 12390-4 (straintest execution)
- for the determination of compressive strengths acc. to EN 12390-3, EN 12504-1 and EN 206
- automatic load increase via digital controller **DIGIMAXX® C24** bypass-control for constant load increase controllable as function between 0.1 - 50 kN/s

Technical Data

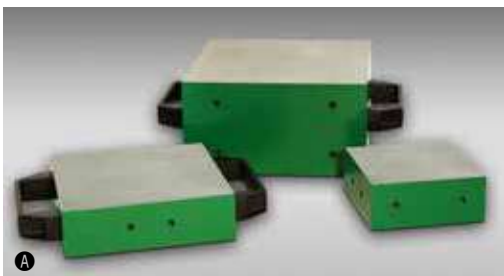
- test load max.: 2,000 kN
 - working pressure: 407 bar
 - piston stroke: 100 mm
 - upper pressure plate: Ø 320 mm
 - lower pressure plate: Ø 300 mm
 - hardness of pressure plates: 53-55 HRC
 - thickness of pressure plate: 75 mm
 - test area height: 340 mm
 - working height: 920 mm
 - inner width of test frame:
 - from left to right (width): 355 mm
 - front to back (depth): 255 mm
 - measuring range: 40 ... 2,000 kN
 - display area: 0 ... 2,000 kN
 - stiffness: 3650 kN/mm
-
- compact design
 - with machine base for hydraulics and electronics
 - lateral housing for display and controller
 - electric multi-piston hydraulic pump mounted in the oil tank
 - pressure control valve
 - liquid pressure transducer (DMS)
-
- electric supply:
 - 230 V, 50 Hz, 1.5 kW
 - dimensions approx.
 - (width x depth x height):
 - 1,360 x 580 x 1,600 mm
 - weight: approx. 1,780 kg



made
in
Germany

VDMA

Roceca DAKES



Technical Data – Digital Controller

- 16 Bit / 48 MHz microprocessor controls
- 100 Hz measuring and control frequency
- high control stability
- adjustable break detection
- integrated driving time of the piston, as time function of the release travel
- automatic calibration program
- 5-digit LCD-screen display
- resolution 60,000 digits
- automatic zero balance
- programmable strength calculation of 10 different test specimens with the corresponding test speeds
- display of strength in N/mm² or Mpa
- display adjustable in kN, N
- peak value memory with reset button
- code-protected calibration resp. linearization
- interface USB for output of peak value

Accessories / Options:

- Ⓐ distance pieces hardened, face-ground to place on the pressure plate dimensions + weight:
210 x 210 x 110 mm - 38 kgs
170 x 170 x 50 mm - 12 kgs
120 x 120 x 50 mm - 5.65 kgs
- Ⓑ distance plates, unhardened, face-ground, to place between pressure platen and piston, fixing by a dowel pin dimensions + weight:
Ø 300 x 60 mm - 33 kgs
Ø 300 x 50 mm - 27 kgs
- Ⓒ centering device for pressure plates and distance pieces
- larger pressure plates dimensions:
320 x 320 x 75 mm
320 x 420 x 75 mm
320 x 520 x 75 mm
- Ⓓ integrated strip printer
- Ⓔ test software **PROTEUS^{MT}**
- transfer software



FORM+TEST Seidner & Co. GmbH

Zwiefalter Str. 20 • D-88499 Riedlingen

phone: +49 (0) 7371 9302-20 • fax: -99

www.formtest.de

sales@formtest.de

Choose the Original
Choose Success!

BASIC-LINE

Compression Testing Machine

ALPHA 3-3000 AD

- accuracy acc. to DIN EN ISO 7500-1, class 1
- execution acc. to EN 12390-4 (straintest execution)
- for the determination of compressive strengths acc. to EN 12390-3, EN 12504-1 and EN 206
- automatic load increase via digital controller **DIGIMAXX® C24** bypass-control for constant load increase controllable as ramp function between 0.1 - 50 kN/s

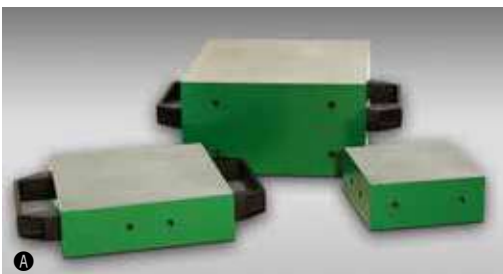
Technical Data

- test load max.: 3,000 kN
- working pressure: 454 bar
- piston stroke: 65 mm
- upper pressure plate: Ø 320 mm
- lower pressure plate: Ø 300 mm
- hardness of pressure plates: 53-55 HRC
- thickness of pressure plate: 75 mm
- test area height: 340 mm
- working height: 920 mm
- inner width of test frame:
 - from left to right (width): 355 mm
 - front to back (depth): 255 mm
- measuring range: 60 ... 3,000 kN
- display area: 0 ... 3,000 kN
- stiffness: 3650 kN/mm

- compact design
- with machine base for hydraulics and electronics
- lateral housing for display and controller
- electric multi-piston hydraulic pump mounted in the oil tank
- pressure control valve
- liquid pressure transducer (DMS)

- electric supply:
 - 230 V, 50 Hz, 1.5 kW
- dimensions approx.
 - (width x depth x height):
 - 1,360 x 580 x 1,600 mm
- weight: approx. 1,780 kg





Technical Data – Digital Controller

- 16 Bit / 48 MHz microprocessor controls
- 100 Hz measuring and control frequency
- high control stability
- adjustable break detection
- integrated driving time of the piston, as time function of the release travel
- automatic calibration program
- 5-digit LCD-screen display
- resolution 60,000 digits
- automatic zero balance
- programmable strength calculation of 10 different test specimens with the corresponding test speeds
- display of strength in N/mm² or Mpa
- display adjustable in kN, N
- peak value memory with reset button
- code-protected calibration resp. linearization
- interface USB for output of peak value

Accessories / Options:

- Ⓐ distance pieces hardened, face-ground to place on the pressure plate dimensions + weight:
210 x 210 x 110 mm - 38 kgs
170 x 170 x 50 mm - 12 kgs
120 x 120 x 50 mm - 5,65 kgs
- Ⓑ distance plates, unhardened, face-ground, to place between pressure platen and piston, fixing by a dowel pin dimensions + weight:
Ø 300 x 60 mm - 33 kgs
Ø 300 x 50 mm - 27 kgs
- Ⓒ centering device for pressure plates and distance pieces
- larger pressure plates dimensions:
320 x 320 x 75 mm
320 x 420 x 75 mm
320 x 520 x 75 mm
- Ⓓ integrated strip printer
- Ⓔ test software **PROTEUS^{MT}**
- transfer software



FORM+TEST Seidner & Co. GmbH

Zwiefalter Str. 20 • D-88499 Riedlingen

phone: +49 (0) 7371 9302-20 • fax: -99

www.formtest.de

sales@formtest.de