

Choose the Original
Choose Success!



Picture: Testing machine frame with chromium plated machine's columns (options)



PROFI-LINE

Hardened Concrete Test

Compression Testing Machine ALPHA 3-2000 S

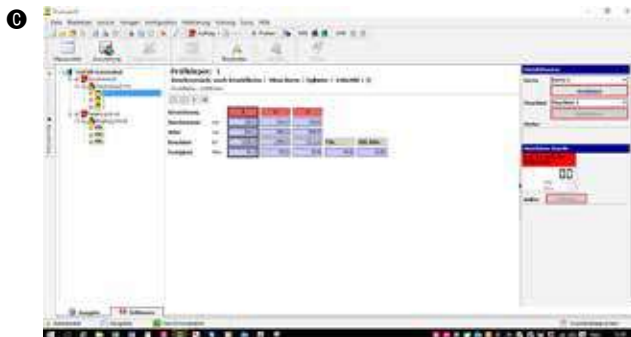
- accuracy acc. to DIN EN ISO 7500-1, class 1
- execution acc. to EN 12390-4 (straintest execution)
- for compressive strength tests acc. to EN 12390-3, EN 12504-1 and EN 206
- separate drive station AS-C20-N
- automatic load increase by digital controller **DIGIMAXX® C-20** in closed loop system

Technical Data – Test Frame

- test load max.: 2,000 kN
- working pressure max.: 407 bar
- piston stroke: 100 mm
- upper pressure plate: Ø 320 mm
- lower pressure plate: Ø 300 mm
- thickness of pressure plates: 75 mm
- hardness of pressure plates: 55 HRC
- test area height: 340 mm
- inner width between columns (width): 355 mm
- inner width between columns (depth): 255 mm
- stiffness: 3,650 kN/mm
- measuring range: 40 ... 2,000 kN
- display area: 0 ... 2,000 kN
- force measurement via electronic pressure transducer
- voltage: 3 x 400 Volt, 50 Hz, 1.5 kW
- weight: 1,810 kg



Picture: Drive Station AS-C-20N-PC (option)



Technical Data – Digital Controller

- 5-digit LCD-screen display
- resolution 60.000 digits
- automatic zero balance
- programmable strength calculation of 30 different test specimens with the corresponding test speeds
- display of strength in N/mm² oder Mpa
- display adjustable in kN, N, kg, kp, to or bar
- peak value memory with reset button
- code-protected calibration resp. linearization
- interface USB for output of peak value

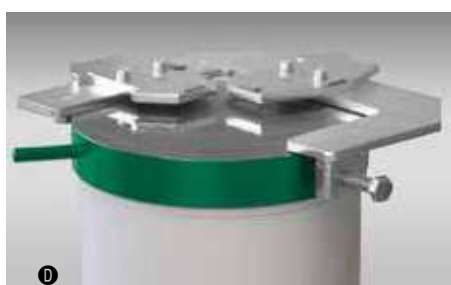
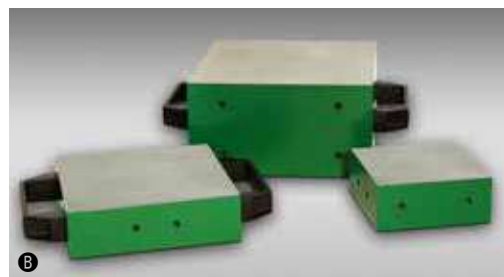
Accessories:

for reduction of test chamber height

- Ⓐ distance plates, unhardened, face-ground, to place between pressure platen and piston, fixing by a dowel pin
dimensions Ø 300 x 50 mm, 27 kg
dimensions Ø 300 x 60 mm, 33 kg
- Ⓑ distance pieces hardened, face-ground to place on the pressure plate
dimensions 210 x 210 x 110 mm, 38 kg
dimensions 210 x 210 x 50 mm, 17,5 kg
dimensions 170 x 170 x 50 mm, 12 kg
dimensions 120 x 120 x 50 mm, 5,65 kg

Options:

- connection of further (max. 4) testing machines
- larger pressure plates
dimensions 320 x 320 x 75 mm
dimensions 320 x 420 x 75 mm
dimensions 320 x 520 x 75 mm
- higher test area
- chrome-plated columns
- integrated strip printer
- transfer software WinTrans
- Ⓒ test software **PROTEUS^{MT}**
- Ⓓ centerring devices for pressure plates
- Ⓔ centerring devices for distance pieces



FORM+TEST Seidner & Co. GmbH

Zwiefalter Str. 20 • 88499 Riedlingen
phone: +49 (0) 7371 9302-20 • fax: -99
www.formtest.de
sales@formtest.de

Choose the Original
Choose Success!



Picture: Testing machine frame with chromium plated machine's columns (options)



PROFI-LINE

Hardened Concrete Test

Compression Testing Machine ALPHA 3-3000 S

- accuracy acc. to DIN EN ISO 7500-1, class 1
- execution acc. to EN 12390-4 (straintest execution)
- for compressive strength tests acc. to EN 12390-3, EN 12504-1 and EN 206
- separate drive station AS-C20-N
- automatic load increase by digital controller **DIGIMAXX® C-20** in closed loop system

Technical Data – Test Frame

- test load max.: 3,000 kN
- working pressure max.: 397 bar
- piston stroke: 100 mm
- upper pressure plate: Ø 320 mm
- lower pressure plate: Ø 300 mm
- thickness of pressure plates: 75 mm
- hardness of pressure plates: 55 HRC
- test area height: 340 mm
- inner width between columns (width): 355 mm
- inner width between columns (depth): 255 mm
- stiffness: 3,650 kN/mm
- measuring range: 60 ... 3,000 kN
- display area: 0 ... 3,000 kN
- force measurement via electronic pressure transducer
- voltage: 3 x 400 Volt, 50 Hz, 1.5 kW
- weight: 1,810 kg



Picture: Drive Station AS-C-20N-PC (option)



Technical Data – Digital Controller

- 5-digit LCD-screen display
- resolution 60.000 digits
- automatic zero balance
- programmable strength calculation of 30 different test specimens with the corresponding test speeds
- display of strength in N/mm² oder Mpa
- display adjustable in kN, N, kg, kp, to or bar
- peak value memory with reset button
- code-protected calibration resp. linearization
- interface USB for output of peak value

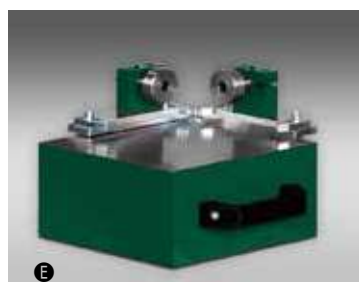
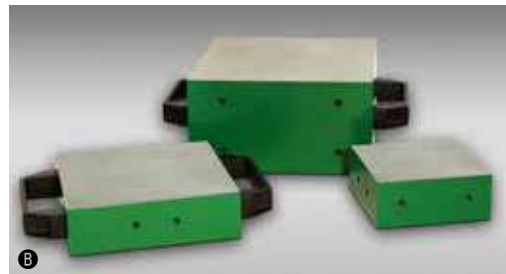
Accessories:

for reduction of test chamber height

- Ⓐ distance plates, unhardened, face-ground, to place between pressure platen and piston, fixing by a dowel pin
dimensions Ø 300 x 50 mm, 27 kg
dimensions Ø 300 x 60 mm, 33 kg
- Ⓑ distance pieces hardened, face-ground to place on the pressure plate
dimensions 210 x 210 x 110 mm, 38 kg
dimensions 170 x 170 x 50 mm, 12 kg
dimensions 120 x 120 x 50 mm, 5,65 kg

Options:

- connection of further (max. 4) testing machines
- larger pressure plates
dimensions 320 x 420 x 75 mm
dimensions 320 x 520 x 75 mm
- higher test area
- chrome-plated columns
- integrated strip printer
- transfer software WinTrans
- Ⓒ test software **PROTEUS^{MT}**
- Ⓓ centring devices for pressure plates
- Ⓔ centring devices for distance pieces



FORM+TEST Seidner & Co. GmbH
 Zwiefalter Str. 20 • 88499 Riedlingen
 phone: +49 (0) 7371 9302-20 • Fax: -99
 www.formtest.de
 sales@formtest.de